

LIBG/TIV
BEN GURION

19 MAY 06 (10-3)

JEPPRESEN

TEL AVIV, ISRAEL

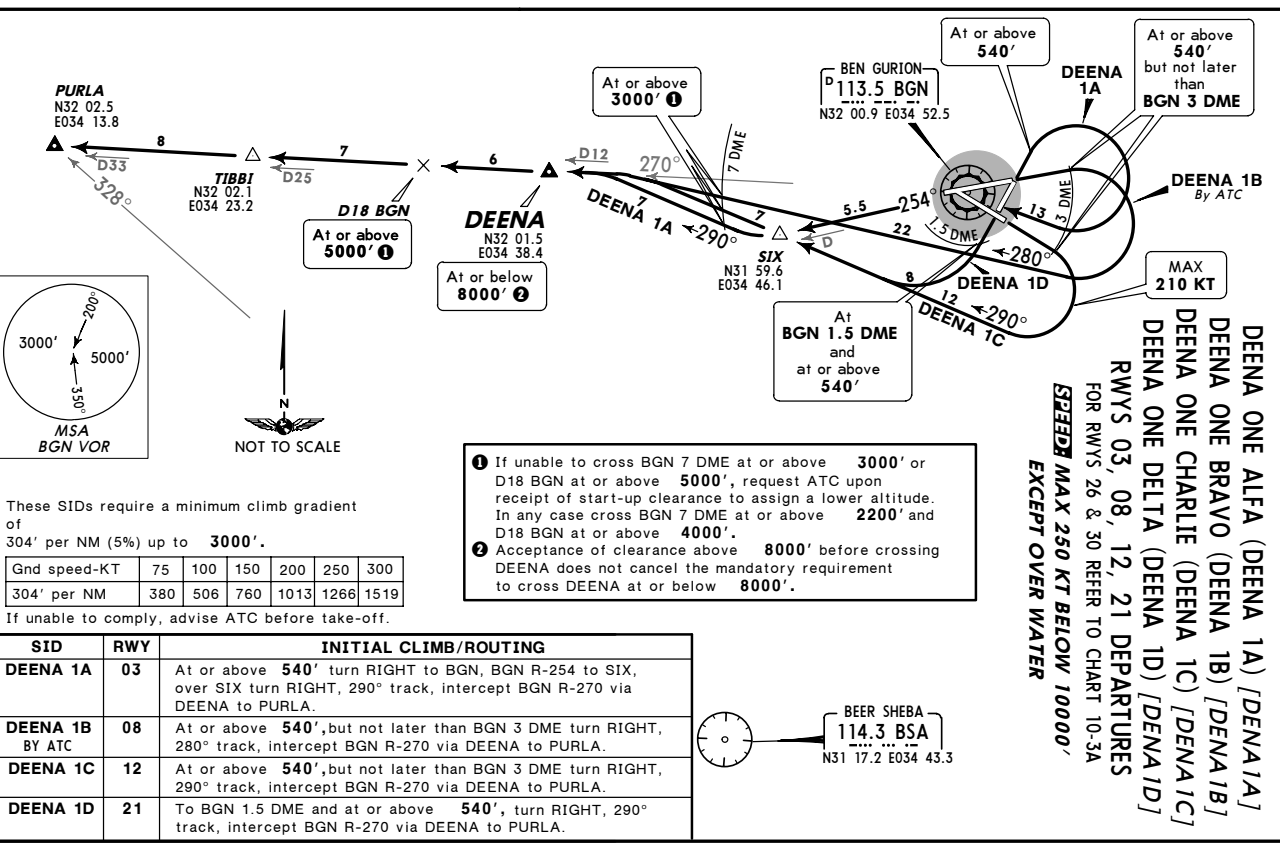
SID

BEN GURION
 Departure
 120.5

Apt Elev
 135'

Trans level: By ATC Trans alt: 10500'

1. Contact BEN GURION Departure as soon as possible after take-off.
 2. SIDs include minimum noise routings (refer to 10-4B). Strict adherence within the limits of aircraft performance is mandatory.



LIBG/TIV
BEN GURION

19 MAY 06 (10-3A)

JEPPRESEN

TEL AVIV, ISRAEL

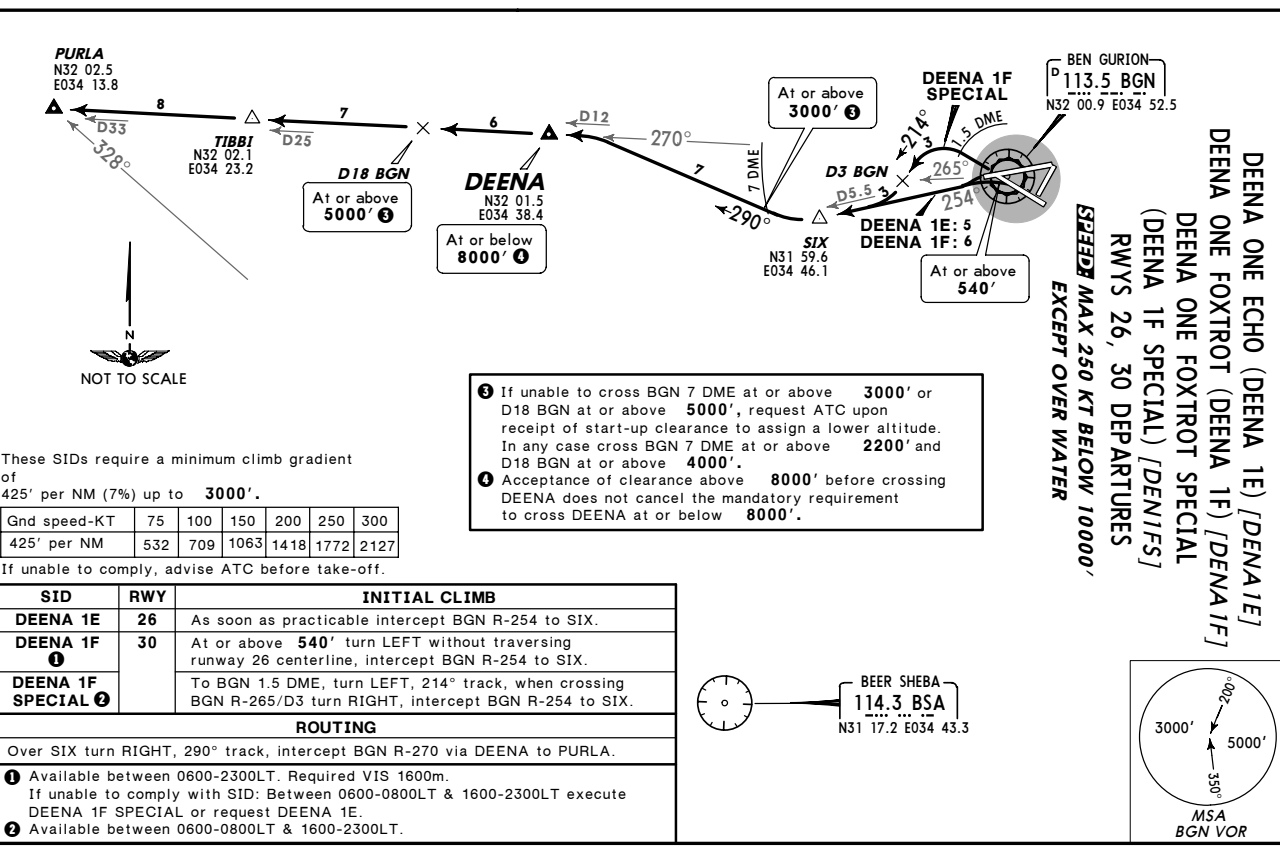
SID

BEN GURION
 Departure
 120.5

Apt Elev
 135'

Trans level: By ATC Trans alt: 10500'

1. Contact BEN GURION Departure as soon as possible after take-off.
 2. SIDs include minimum noise routings (refer to 10-4B). Strict adherence within the limits of aircraft performance is mandatory.

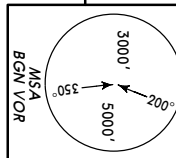


ILBG/TLV
BEN GURION

19 MAY 06 (10-3B)

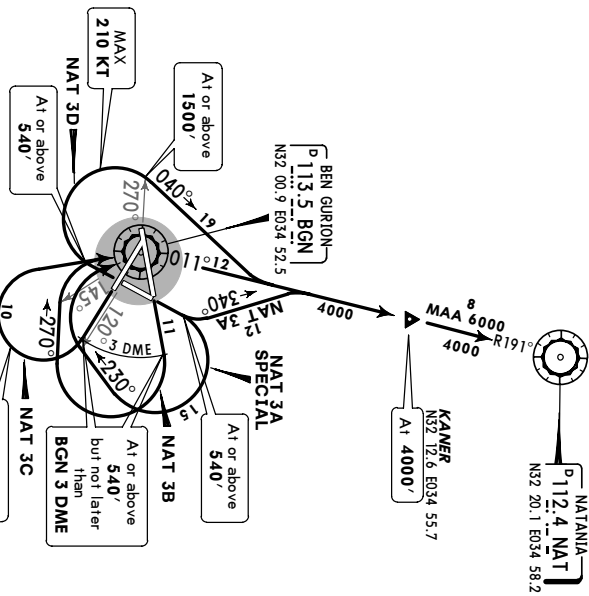
JEPPesen TEL AVIV, ISRAEL
SID

BEN GURION Departure 120.5	Trans alt: By ATC 1. Contact BEN GURION Departure as soon as possible after take-off. 2. SIDs include minimum noise routings (refer to 10-4B). Strict adherence within the limits of aircraft performance is mandatory.
----------------------------------	--



NATANIA THREE ALPHA (NAT 3A)
NATANIA THREE ALPHA SPECIAL (NAT 3A SPECIAL) [NAT3AS]
NATANIA THREE BRAVO (NAT 3B)
NATANIA THREE CHARLIE (NAT 3C)
NATANIA THREE DELTA (NAT 3D)
RWYS 03, 08, 12, 21 DEPARTURES
 FOR RWYS 26 & 30 REFER TO CHART 10-3C

SPEED MAX 250 KT BELOW 10000'
UNLESS OTHERWISE INSTRUCTED BY ATC



These SIDs require minimum climb gradients of

450' per NM (7.4%) up to 4000'.	75	100	150	200	250	300
NAT 3A SPECIAL 4000'.	562	749	1124	1499	1873	2248
431' per NM (7.1%) up to 4000'.	539	719	1079	1438	1798	2157
NAT 3B, 3C, 3D 4000'.	380	506	760	1013	1266	1519

If unable to comply, advise ATC before take-off.

SID	RWY	INITIAL CLIMB/ROUTING
NAT 3A	03	At or above 540' turn LEFT, 340° track, intercept BGN R-011 via KANER to NAT.
NAT 3A SPECIAL	08	At or above 540' turn RIGHT, 230° track, when crossing BGN R-120 turn RIGHT to BGN, BGN R-011 via KANER to NAT.
NAT 3B	12	At or above 540', but not later than BGN 3 DME turn RIGHT, 270° track, when crossing BGN R-145 turn RIGHT to BGN, BGN R-011 via KANER to NAT.
NAT 3C	12	At or above 540', but not later than BGN 3 DME turn RIGHT to BGN, BGN R-011 via KANER to NAT.
NAT 3D	21	At or above 540' turn RIGHT, 040° track, intercept BGN R-011 via KANER to NAT.

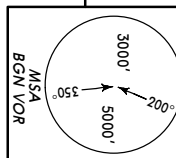
CHANGES: SIDs NAT 3C, 3D speed restriction; chart reindexed. © JEPPESEN SANDERSON, INC., 2003, 2006. ALL RIGHTS RESERVED.

ILBG/TLV
BEN GURION

19 MAY 06 (10-3C)

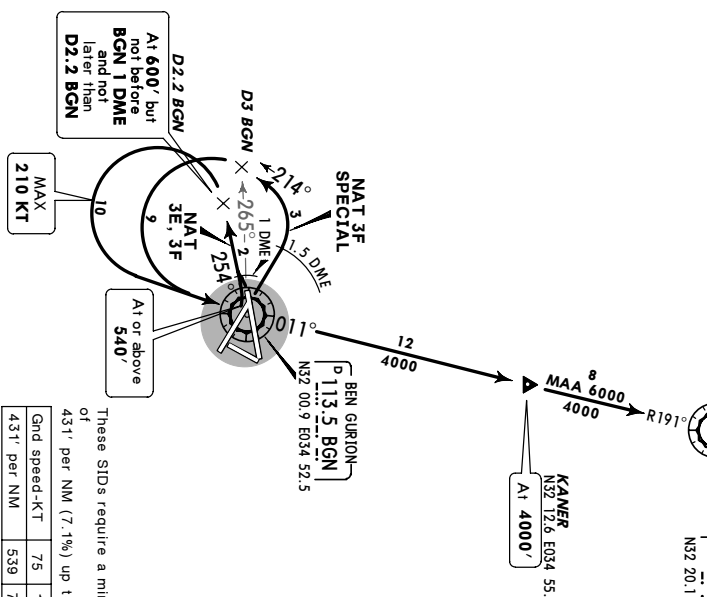
JEPPesen TEL AVIV, ISRAEL
SID

BEN GURION Departure 120.5	Trans alt: By ATC 1. Contact BEN GURION Departure as soon as possible after take-off. 2. SIDs include minimum noise routings (refer to 10-4B). Strict adherence within the limits of aircraft performance is mandatory.
----------------------------------	--



NATANIA THREE ECHO (NAT 3E)
NATANIA THREE FOXTROT (NAT 3F)
NATANIA THREE FOXTROT SPECIAL (NAT 3F SPECIAL) [NAT3FS]
RWYS 26, 30 DEPARTURES

SPEED MAX 250 KT BELOW 10000'
UNLESS OTHERWISE INSTRUCTED BY ATC



These SIDs require a minimum climb gradient of

431' per NM (7.1%) up to 4000'.	75	100	150	200	250	300
431' per NM	539	719	1079	1438	1798	2157

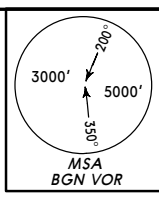
If unable to comply, advise ATC before take-off.

SID	RWY	INITIAL CLIMB/ROUTING
NAT 3E	26	As soon as practicable intercept BGN R-254, at 600', but not before BGN 1 DME and not later than D2.2 BGN turn LEFT to BGN, BGN R-011 via KANER to NAT.
NAT 3F	30	At or above 540' turn LEFT without traversing runway 28 centerline, intercept BGN R-254, at 600', but not before BGN 1 DME and not later than D2.2 BGN turn LEFT to BGN, BGN R-011 via KANER to NAT.
NAT 3F SPECIAL	30	To BGN 1.5 DME, turn LEFT, 214° track, at BGN R-269/D3 turn LEFT to BGN, BGN R-011 via KANER to NAT.

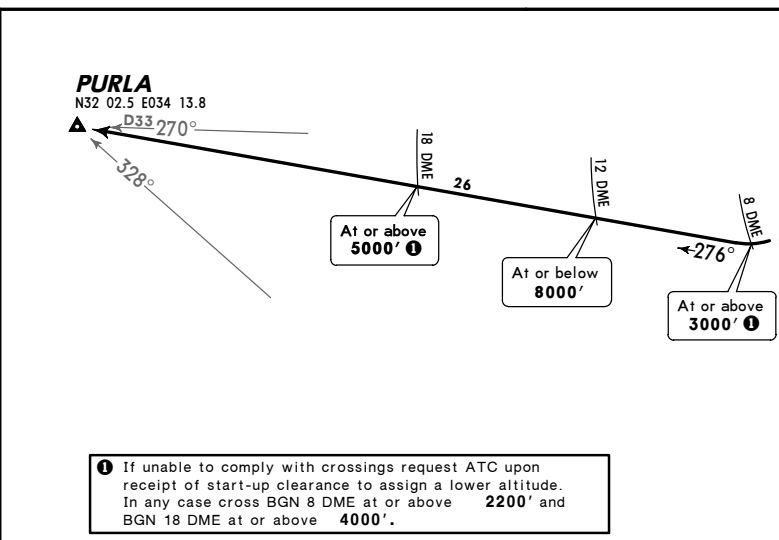
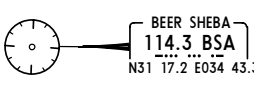
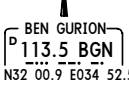
CHANGES: SIDs NAT 3E, 3F speed restriction; chart reindexed. © JEPPESEN SANDERSON, INC., 2003, 2006. ALL RIGHTS RESERVED.

LIBG/TIV
BEN GURION
 19 MAY 06 (10-3D)
JEPPESSEN
TEL AVIV, ISRAEL
SID

Trans level: By ATC
 1. Contact BEN GURION Departure as soon as possible after take-off.
 2. SID include minimum noise routings (refer to 10-4B). Strict adherence within the limits of aircraft performance is mandatory.
 3. This SID is designed specifically to avoid overflying the city of Holon, thus avoiding excessive aircraft noise exposure to its population at night.



PURLA ONE ECHO (PURLA 1E) [PURL1E]
RWY 26 DEPARTURE
 FOR B-747 & B-707 ACFT OPERATING AT THEIR MTOM
 BETWEEN 2300-0600LT ONLY
SPEED MAX 250 KT BELOW 10000'
EXCEPT OVER WATER



1 If unable to comply with crossings request ATC upon receipt of start-up clearance to assign a lower altitude. In any case cross BGN 8 DME at or above 2200' and BGN 18 DME at or above 4000'.

This SID requires a minimum climb gradient of 425' per NM (7%) up to 3000'.

Gnd speed-KT	75	100	150	200	250	300
425' per NM	532	709	1063	1418	1772	2127

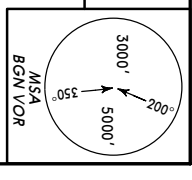
If unable to comply, advise ATC before take-off.

INITIAL CLIMB/ROUTING

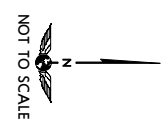
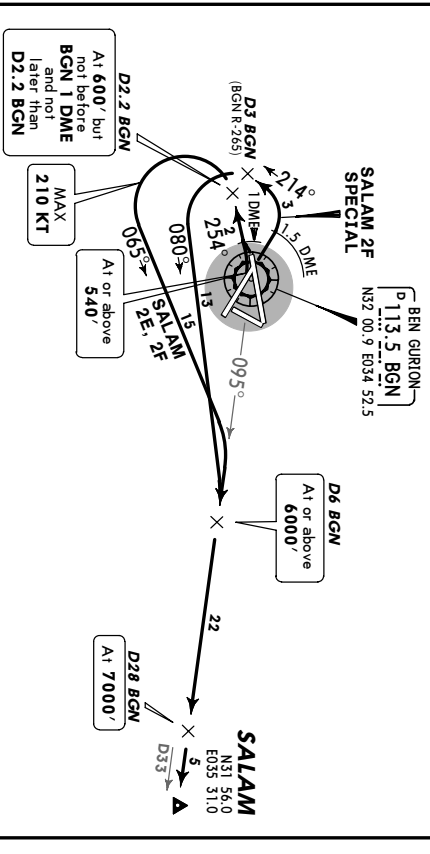
As soon as practicable but not earlier than BGN 1 DME, intercept BGN R-256, at D4.2 BGN turn LEFT, 236° track, at BGN R-248/D7 turn RIGHT, 276° track to PURLA.

LIBG/TIV
BEN GURION
 19 MAY 06 (10-3E)
JEPPESSEN
TEL AVIV, ISRAEL
SID

Trans level: By ATC
 1. Contact BEN GURION Departure as soon as possible after take-off.
 2. SIDs include minimum noise routings (refer to 10-4B). Strict adherence within the limits of aircraft performance is mandatory.



SALAM TWO ECHO (SALAM 2E) [SALAZ2E]
SALAM TWO FOXTROT (SALAM 2F) [SALAZ2F]
SALAM TWO FOXTROT SPECIAL (SALAM 2F SPECIAL) [SALZ2F]
 RWYS 26, 30 DEPARTURES
SPEED MAX 250 KT BELOW 10000'
UNLESS OTHERWISE INSTRUCTED BY ATC



These SIDs require a minimum climb gradient of 450' per NM (7.4%) up to 6000'.

Gnd speed-KT	75	100	150	200	250	300
450' per NM	562	749	1124	1499	1873	2248

If unable to comply, advise ATC before take-off.

INITIAL CLIMB

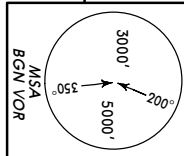
SID	RWY	INITIAL CLIMB
SALAM 2E	26	As soon as practicable intercept BGN R-254, at BGN 1 DME and not later than D2.2 BGN turn LEFT, 065° track.
SALAM 2F	30	At or above 540' turn LEFT without traversing runway 26 centerline, intercept BGN R-254, at 600', but not before BGN 1 DME and not later than D2.2 BGN turn LEFT, 065° track.
SALAM 2F SPECIAL		To BGN 1.5 DME, turn LEFT, 214° track, when crossing BGN R-265/D3 turn LEFT, 080° track.

ROUTING

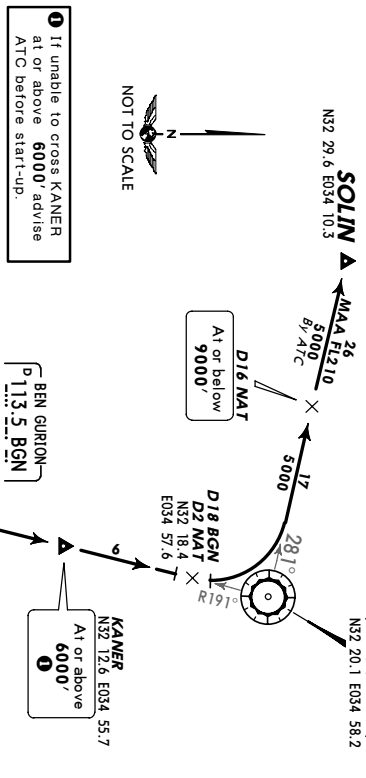
- 1 Available between 0600-2300LT. Required V/S 1600m. If unable to comply with SID, Between 0600-0800LT & 1600-2300LT, execute SALAM 2F SPECIAL or request SALAM 2E.
- 2 Available between 0600-0800LT & 1600-2300LT.

ILBG/TLV
BEN GURION
 19 MAY 06 (10-3F)
JEPPesen
TEL AVIV, ISRAEL
SID

BNR GURION Departure 120.5	Ap't Elev 135'	Trans level: By ATC 1. Contact BEN GURION Departure as soon as possible after take-off. 2. SIDs include minimum noise routings (refer to 10-4B). Strict adherence within the limits of aircraft performance is mandatory.
----------------------------------	-------------------	--



SOLIN THREE ALPHA (SOLIN 3A) [SOL13A]
SOLIN THREE BRAVO (SOLIN 3B) [SOL13B]
SOLIN THREE CHARLIE (SOLIN 3C) [SOL13C]
SOLIN THREE DELTA (SOLIN 3D) [SOL13D]
 RWYS 03, 08, 12, 21 DEPARTURES
 FOR SIDS RWYS 26 & 30 REFER TO CHART 10-3G
EEEDD MAX 250 KT BELOW 10000'
UNLESS OTHERWISE INSTRUCTED BY ATC



These SIDs require minimum climb gradients of

SOLIN 3A	486' per NM (8%) up to 6000'.
If unable to comply, execute SID SOLIN 3A SPECIAL.	
SOLIN 3A SPECIAL	431' per NM (7.1%) up to 6000'.
SOLIN 3B, 3C, 3D	304' per NM (5%) up to 6000'.

Gnd speed-KT	75	100	150	200	250	300
486' per NM	608	810	1215	1620	2025	2430
431' per NM	539	719	1079	1438	1798	2157
304' per NM	380	506	760	1013	1266	1519

SID	RWY	INITIAL CLIMB
SOLIN 3A	03	At or above 540' turn LEFT, 340° track.
SOLIN 3A SPECIAL		At or above 540' turn RIGHT, 230° track, when crossing BGN R-120 turn RIGHT to BGN.
SOLIN 3B	08	At or above 540', but not later than BGN 3 DME turn RIGHT, 270° track, when crossing BGN R-145 turn RIGHT to BGN.
SOLIN 3C	12	At or above 540', but not later than BGN 3 DME turn RIGHT to BGN.
SOLIN 3D	21	At or above 540' turn RIGHT, 040° track.

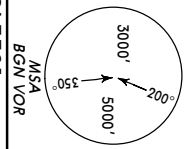
ROUTING

Intercept BGN R-011 via KANER to D18 BGN (D2 NAT), turn LEFT, intercept NAT R-281 to SOLIN.

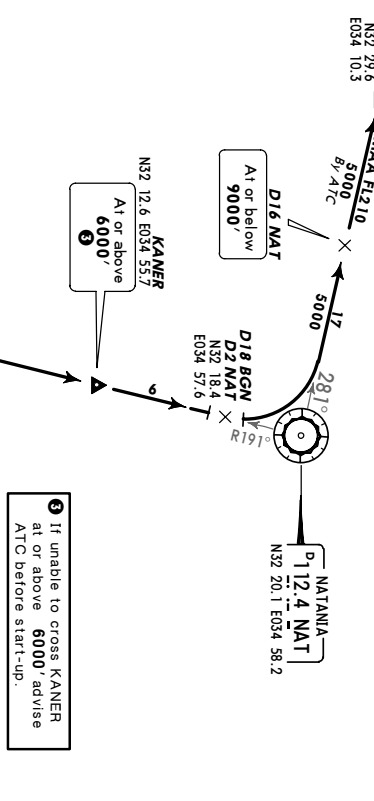
CHANGES: SIDs SOLIN 3C, 3D speed restrictions, chart reindexed. © JEPPESEN SANDERSON, INC., 2003, 2006. ALL RIGHTS RESERVED.

ILBG/TLV
BEN GURION
 19 MAY 06 (10-3G)
JEPPesen
TEL AVIV, ISRAEL
SID

BNR GURION Departure 120.5	Ap't Elev 135'	Trans level: By ATC 1. Contact BEN GURION Departure as soon as possible after take-off. 2. SIDs include minimum noise routings (refer to 10-4B). Strict adherence within the limits of aircraft performance is mandatory.
----------------------------------	-------------------	--



SOLIN THREE ECHO (SOLIN 3E) [SOL13E]
SOLIN THREE FOXTROT (SOLIN 3F) [SOL13F]
SOLIN THREE FOXTROT SPECIAL (SOLIN 3F SPECIAL) [SOL13FS]
 RWYS 26, 30 DEPARTURES
EEEDD MAX 250 KT BELOW 10000'
UNLESS OTHERWISE INSTRUCTED BY ATC



These SIDs require a minimum climb gradient of

SOLIN 3E	431' per NM (7.1%) up to 6000'.
SOLIN 3F	431' per NM (7.1%) up to 6000'.

Gnd speed-KT	75	100	150	200	250	300
431' per NM	539	719	1079	1438	1798	2157

SID	RWY	INITIAL CLIMB
SOLIN 3E	26	As soon as practicable intercept BGN R-254, at 600', but not before BGN 1 DME and not later than D2.2 BGN turn LEFT to BGN.
SOLIN 3F	30	At or above 540' turn LEFT without traversing runway 26 centerline, intercept BGN R-254, at 600', but not before BGN 1 DME and not later than D2.2 BGN turn LEFT to BGN.
SOLIN 3F SPECIAL		To BGN 1.5 DME, turn LEFT, 214° track, when crossing BGN R-265/D3 turn LEFT to BGN.

ROUTING

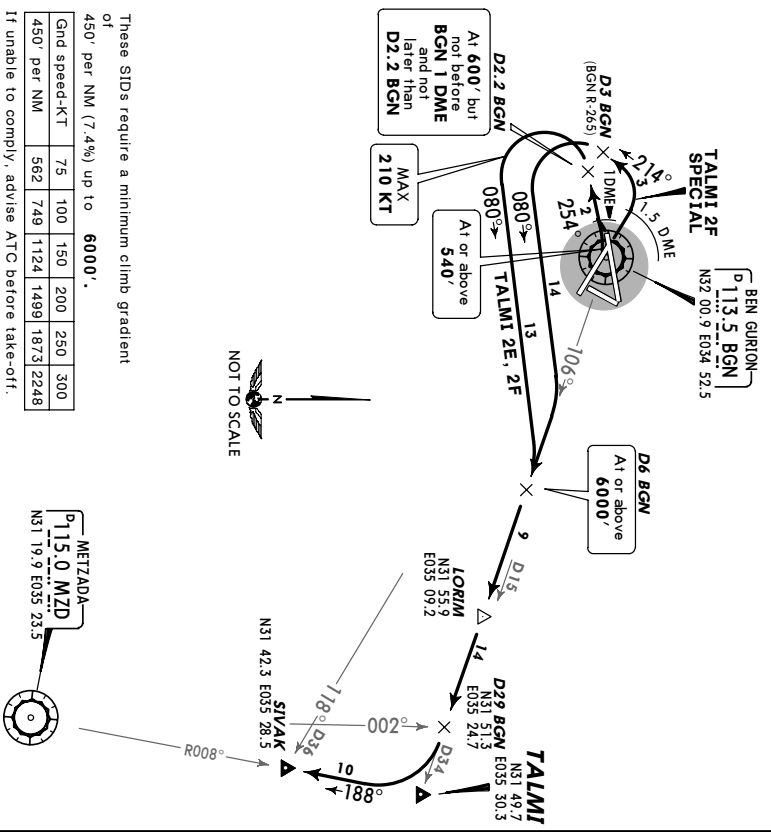
At BGN, BGN R-011 via KANER to D18 BGN (D2 NAT), turn LEFT, intercept NAT R-281 to SOLIN.

CHANGES: SIDs SOLIN 3E, 3F speed restrictions, chart reindexed. © JEPPESEN SANDERSON, INC., 2003, 2006. ALL RIGHTS RESERVED.

ILBG/TLV
BEN GURION
 19 MAY 06 (10-3H)
JEPPesen
TEL AVIV, ISRAEL
SID

BEN GURION Departure 120.5	Trans level: By ATC Trans alt: By ATC
Apt Elev 135'	1. Contact BEN GURION Departure as soon as possible after take-off. 2. SIDs include minimum noise routings (refer to 10-4B). Strict adherence within the limits of aircraft performance is mandatory.

TALMI TWO ECHO (TALMI 2E) [TALM2E]
TALMI TWO FOXTROT (TALMI 2F) [TALM2F]
TALMI TWO FOXTROT SPECIAL (TALMI 2F SPECIAL) [TAL2FS]
RWYS 26, 30 DEPARTURES
SPEED MAX 250 KT BELOW 10000'
UNLESS OTHERWISE INSTRUCTED BY ATC



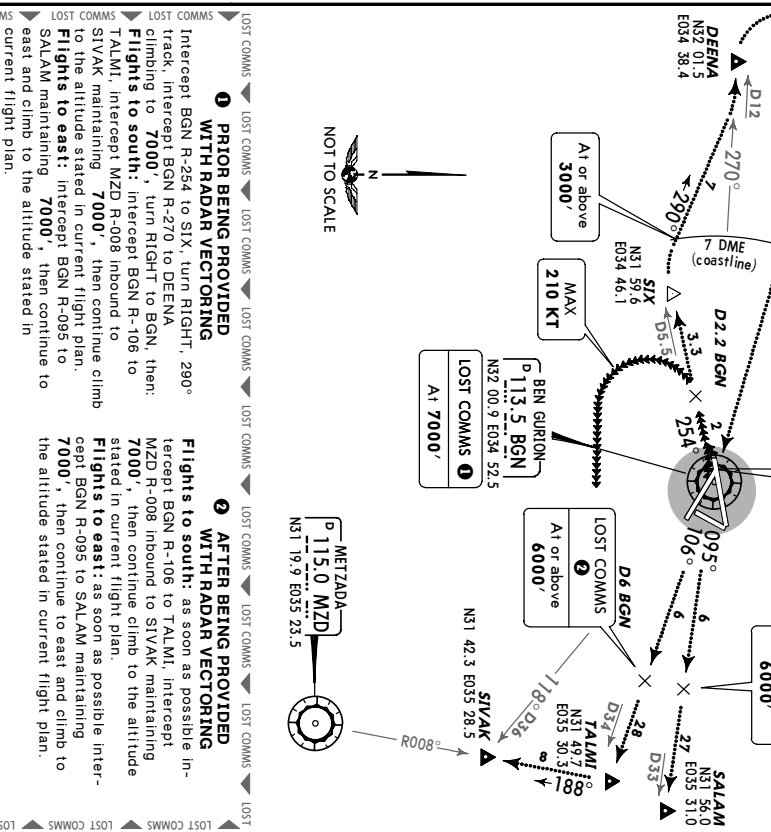
SID	RWY	INITIAL CLIMB
TALMI 2E	26	As soon as practicable intercept BGN R-254, at 600', but not before BGN 1 DME and not later than D2.2 BGN turn LEFT, 080° track.
TALMI 2F	30	At or above 540' turn LEFT without traversing runway 26 centerline, intercept BGN R-254, at 600', but not before BGN 1 DME and not later than D2.2 BGN turn LEFT, 080° track.
TALMI 2F SPECIAL		To BGN 1.5 DME, turn LEFT, 214° track, when crossing BGN R-265/D3 turn LEFT, 080° track.

Intercept BGN R-106, at D29 BGN turn RIGHT, intercept MZD R-008 inbound to SIVAK. Between D29 BGN and SIVAK maintain 7000' or 9000'.
 1 Available between 0600-2300LT. Required VIS 1600m. If unable to comply with SID.
 2 Between 0600-0800LT & 1600-2300LT execute TALMI 2F SPECIAL or request TALMI 2E.
 3 Available between 0600-0800LT & 1600-2300LT.
 CHANGES: SIDs TALMI 2E, 2F speed restriction, chart reindexed. © JEPPesen SANDERSON, INC., 2003, 2006. ALL RIGHTS RESERVED.

ILBG/TLV
BEN GURION
 19 MAY 06 (10-3H)
JEPPesen
TEL AVIV, ISRAEL
RADAR DEPARTURE

BEN GURION Departure 120.5	Trans level: By ATC Trans alt: By ATC
Apt Elev 135'	1. Contact BEN GURION Departure as soon as possible after take-off. 2. For noise abatement refer to charts 10-4 & 10-4A. 3. Radar vectoring will be issued in accordance to MVA.

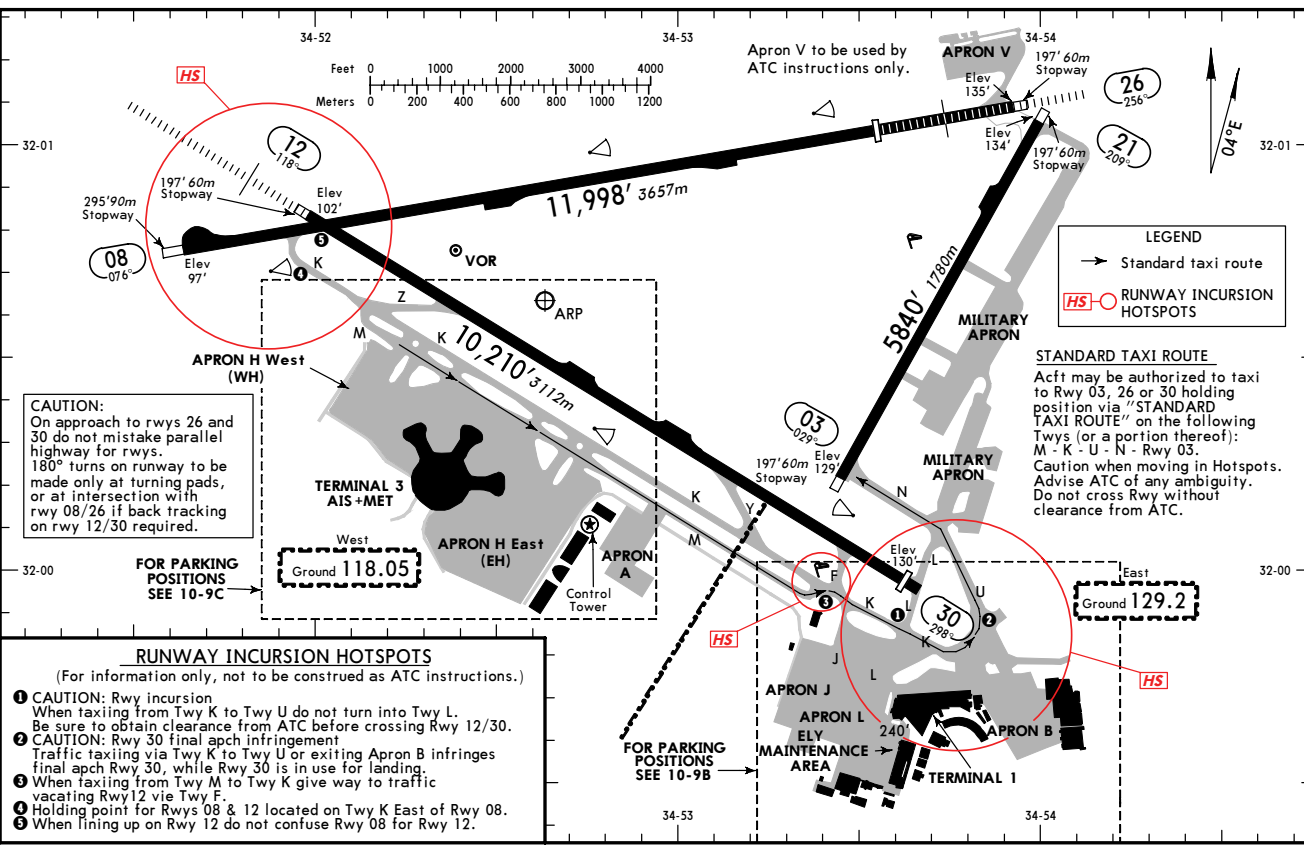
EASTBOUND TWO
RWYS 26, 30 RADAR VECTOR DEPARTURE
SPEED MAX 250 KT BELOW 10000'
UNLESS OTHERWISE INSTRUCTED BY ATC



RWY	INITIAL CLIMB/ROUTING
26	This departure requires a minimum climb gradient of 450' per NM (7.4%) up to 6000'. If unable to comply, advise ATC before take-off.
30	As soon as practicable intercept BGN R-254, expect radar vectoring eastbound and further instructions by BEN GURION Departure.

Intercept BGN R-106, at D29 BGN turn RIGHT, intercept MZD R-008 inbound to SIVAK. Between D29 BGN and SIVAK maintain 7000' or 9000'.
 1 If unable to comply request runway 26.
 2 To be assigned between 0600-2300LT. Required VIS 1600m.
 3 If unable to comply request runway 26.
 CHANGES: Trans level, procedures revised, chart reindexed. © JEPPesen SANDERSON, INC., 2003, 2006. ALL RIGHTS RESERVED.

ATIS	*BEN GURION Clearance (Cpl)	132.5	118.3	118.05	129.2	132.1	120.5
West	Ground	East	Tower				BEN GURION Departure



GENERAL		ADDITIONAL RUNWAY INFORMATION	
Birds in vicinity of airport. Rwy's 03, 08 & 12 right-hand circuit.			
RWY	HIRL (50m) CL (30m)	USABLE LENGTHS	
		LANDING BEYOND Threshold	GLIDE SLOPE TAKE-OFF WIDTH
03	HIRL (50m) CL (30m)	PAP1-L (3.0°)	148' 45m
08	HIRL (50m) CL (30m)	PAP1 (3.0°)	148' 45m
26	HIRL (50m) CL (30m)	HIALS TDZ	
30	HIRL (50m) CL (30m)	RAIL PAP1 (3.25°)	148' 45m

08	HIRL (50m) CL (30m)	PAP1 (3.0°)	RVR	10,050 3057m	9179' 2798m	148' 45m
26	HIRL (50m) CL (30m)	HIALS TDZ	RVR	10,050 3057m	9179' 2798m	148' 45m
30	HIRL (50m) CL (30m)	RAIL PAP1 (3.25°)	RVR	19964' 3037m	9147' 2798m	148' 45m

08	HIRL (50m) CL (30m)	PAP1 (3.0°)	RVR	10,050 3057m	9179' 2798m	148' 45m
26	HIRL (50m) CL (30m)	HIALS TDZ	RVR	10,050 3057m	9179' 2798m	148' 45m
30	HIRL (50m) CL (30m)	RAIL PAP1 (3.25°)	RVR	19964' 3037m	9147' 2798m	148' 45m

08	HIRL (50m) CL (30m)	PAP1 (3.0°)	RVR	10,050 3057m	9179' 2798m	148' 45m
26	HIRL (50m) CL (30m)	HIALS TDZ	RVR	10,050 3057m	9179' 2798m	148' 45m
30	HIRL (50m) CL (30m)	RAIL PAP1 (3.25°)	RVR	19964' 3037m	9147' 2798m	148' 45m

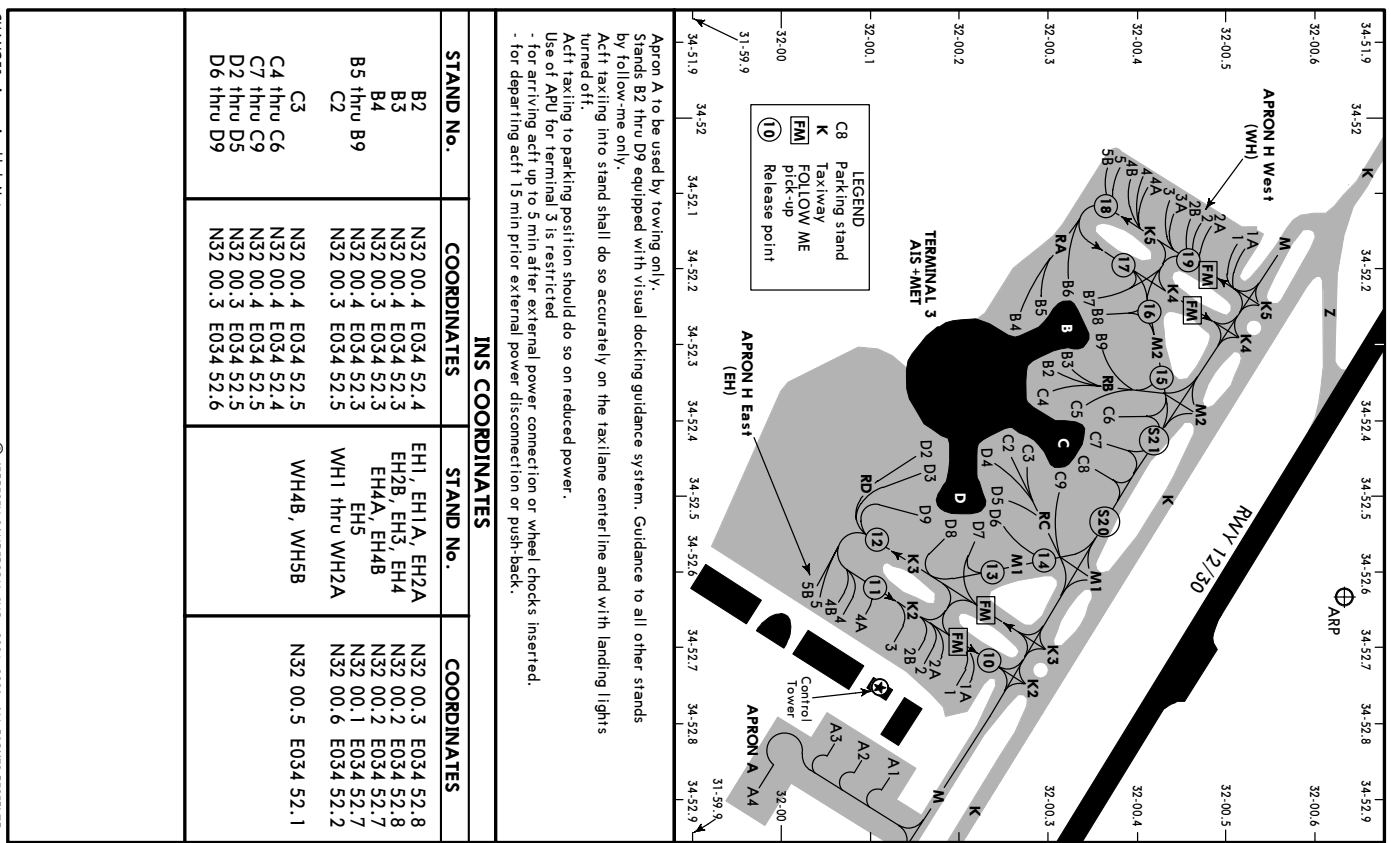
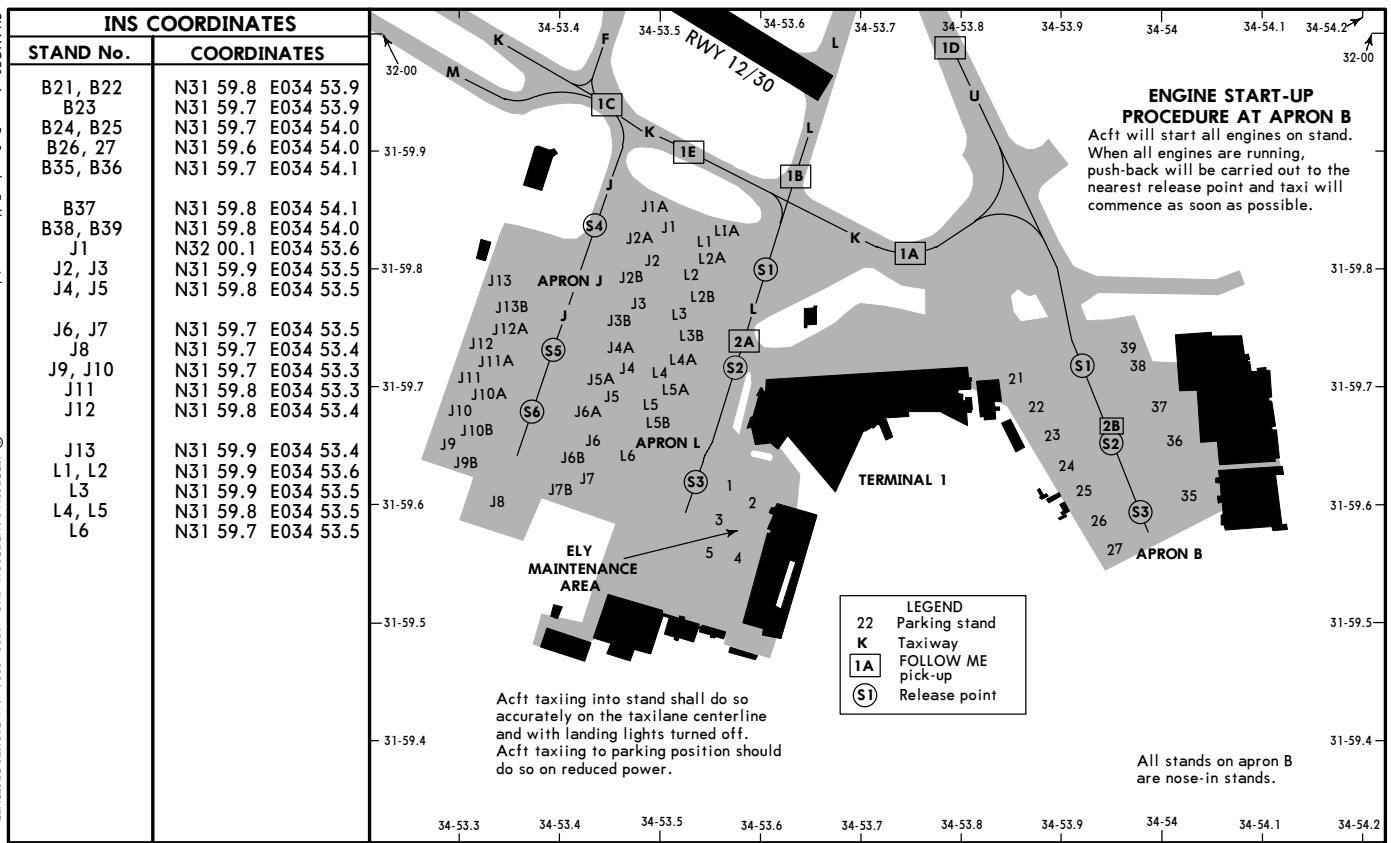
08	HIRL (50m) CL (30m)	PAP1 (3.0°)	RVR	10,050 3057m	9179' 2798m	148' 45m
26	HIRL (50m) CL (30m)	HIALS TDZ	RVR	10,050 3057m	9179' 2798m	148' 45m
30	HIRL (50m) CL (30m)	RAIL PAP1 (3.25°)	RVR	19964' 3037m	9147' 2798m	148' 45m

08	HIRL (50m) CL (30m)	PAP1 (3.0°)	RVR	10,050 3057m	9179' 2798m	148' 45m
26	HIRL (50m) CL (30m)	HIALS TDZ	RVR	10,050 3057m	9179' 2798m	148' 45m
30	HIRL (50m) CL (30m)	RAIL PAP1 (3.25°)	RVR	19964' 3037m	9147' 2798m	148' 45m

08	HIRL (50m) CL (30m)	PAP1 (3.0°)	RVR	10,050 3057m	9179' 2798m	148' 45m
26	HIRL (50m) CL (30m)	HIALS TDZ	RVR	10,050 3057m	9179' 2798m	148' 45m
30	HIRL (50m) CL (30m)	RAIL PAP1 (3.25°)	RVR	19964' 3037m	9147' 2798m	148' 45m

08	HIRL (50m) CL (30m)	PAP1 (3.0°)	RVR	10,050 3057m	9179' 2798m	148' 45m
26	HIRL (50m) CL (30m)	HIALS TDZ	RVR	10,050 3057m	9179' 2798m	148' 45m
30	HIRL (50m) CL (30m)	RAIL PAP1 (3.25°)	RVR	19964' 3037m	9147' 2798m	148' 45m

08	HIRL (50m) CL (30m)	PAP1 (3.0°)	RVR	10,050 3057m	9179' 2798m	148' 45m
26	HIRL (50m) CL (30m)	HIALS TDZ	RVR	10,050 3057m	9179' 2798m	148' 45m
30	HIRL (50m) CL (30m)	RAIL PAP1 (3.25°)	RVR	19964' 3037m	9147' 2798m	148' 45m



TAKE-OFF RWY 12, 30

LVP must be in Force			
RL, CL & mult. RVR req	RL & CL	RCLM (DAY only) or RL	RCLM (DAY only) or RL
A 150m	200m	250m	400m
B 200m	250m	300m	500m
C 250m			
D 300m			

STRAIGHT-IN RWY

	A	B	C	D
08 VOR DME	500' (403')	500' (403')	500' (403')	500' (403')
	1600m	1600m	2000m	2400m
12 ILS DME	312' (200')	312' (200')	312' (200')	312' (200')
	800m	800m	800m	800m
ALS out	1200m	1200m	1200m	1200m
LOC	520' (408')	520' (408')	520' (408')	520' (408')
	900m	1000m	1200m	1400m
ALS out	1600m	1600m	2000m	2000m
VOR DME	580' (468')	580' (468')	580' (468')	580' (468')
	1000m	1200m	1200m	1600m
ALS out	1600m	1600m	2000m	2400m
26 ILS	324' (200')	324' (200')	324' (200')	324' (200')
	800m	800m	800m	800m
ALS out	374' (250')	374' (250')	374' (250')	374' (250')
	1200m	1200m	1200m	1200m
LOC				

NOT AUTHORIZED				
VOR DME	500' (376')	500' (376')	500' (376')	500' (376')
	cell400' - 900m	cell1400' - 1000m	cell1400' - 1000m	cell1400' - 1600m
ALS out	cell1400' - 1600m	cell1400' - 1600m	cell1400' - 1800m	cell1400' - 2000m
30 VOR DME	640' (510')	640' (510')	640' (510')	640' (510')
	R1600m	R1600m	R2000m	R2400m

CIRCLE-TO-LAND ①

90 KT	120 KT	140 KT	165 KT
580' (445') ②	640' (505') ③	740' (605') ④	840' (705') ⑤
V1600m ⑥	V1600m ⑦	V2400m ⑧	V3600m ⑨

- ① High terrain East of airport. Remain within D3.8 BGN.
- ② VOR DME 08: MDA(H) 600' (465').
- ③ VOR DME 26: Cell 500' required.
- ④ VOR DME 26: Cell 600' required.

TAKE-OFF RWY 03, 21

LVP must be in Force			
RL & CL	RCLM (DAY only) or RL	RCLM (DAY only) or RL	NIL (DAY only)
A 200m	250m	400m	500m
B 250m			
C 300m			
D 350m			

TAKE-OFF RWY 08, 26

LVP must be in Force				
Approved Operators HRL, CL & mult. RVR req	RL, CL & mult. RVR req	RL & CL	RCLM (DAY only) or RL	RCLM (DAY only) or RL
A 125m	150m	200m	250m	400m
B 150m	200m	250m	300m	500m
C 200m				
D 250m				

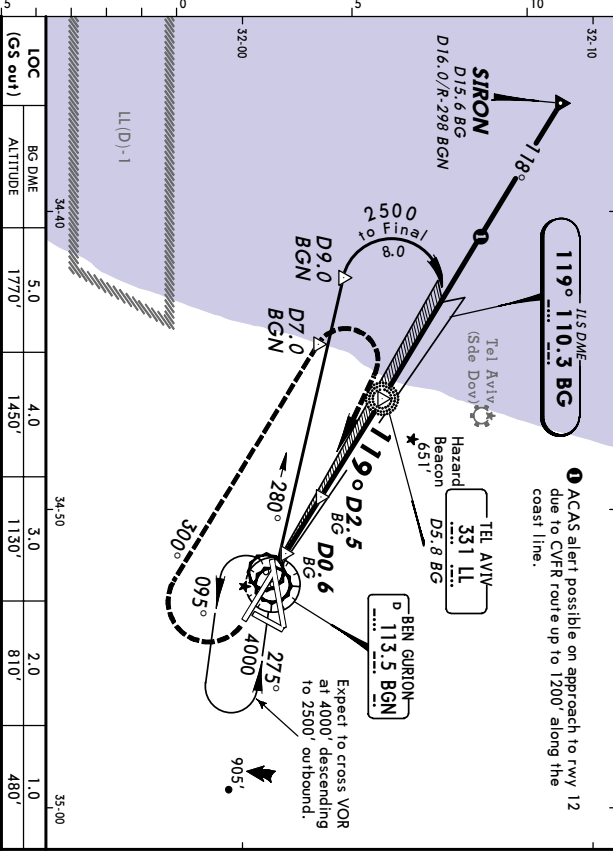
ILBG/TLV
BEN GURION
18 AUG 06 (1-1) **JEPPesen** **EFF 31 AUG**
TEL AVIV, ISRAEL
ILS DME Rwy 12

ATIS	BEN GURION Approach	BEN GURION Tower	Ground
132.5	120.5	132.1	129.2
LOC	Final	GS	ILS
110.3	119°	2033' (1921')	312' (200')
BA	Appch Crs	Left	DA(H)
			112'
			Rwy
			112'

MISSED APCH: Climb STRAIGHT AHEAD to 500', then turn RIGHT onto 300° to cross D7.0 BGN at 3000', then turn RIGHT to VOR climbing to 4000' and hold.

Air Set: IFA Rwy Elev: 4 Hpa Trans level: FL 115 Trans alt: 10500'

ILS DME reads zero at rwy 12 threshold.



TERPS

LOC	BC DME	ALTIMETER	GS out	LOC (GS out)
	5.0	1770'	4.0	1450'
			3.0	1130'
			2.0	810'
			1.0	480'

Grnd speed-Kts: 70 90 100 120 140 160
ILS GS: 3.00° 377 484 538 646 753 861
MAP at D0.6 BGN

ILS STRAIGHT-IN LANDING Rwy 12
DA(H) 312' (200')
FULL TDZ or Cl out ALS out
MDA(H) 520' (408')
ALS out

CIRCLE-TO-LAND LOC (GS out)
High terrain East of airport
Remain within D3.8 BGN
HIALS 500'
REL PAPI PAPI
RT

TERPS

A	B	C	D
RVR 550m	RVR 720m	RVR 800m	RVR 1800m
1200m	1200m	1200m	165
1200m	1200m	1200m	830' (695')

CHANGES: None

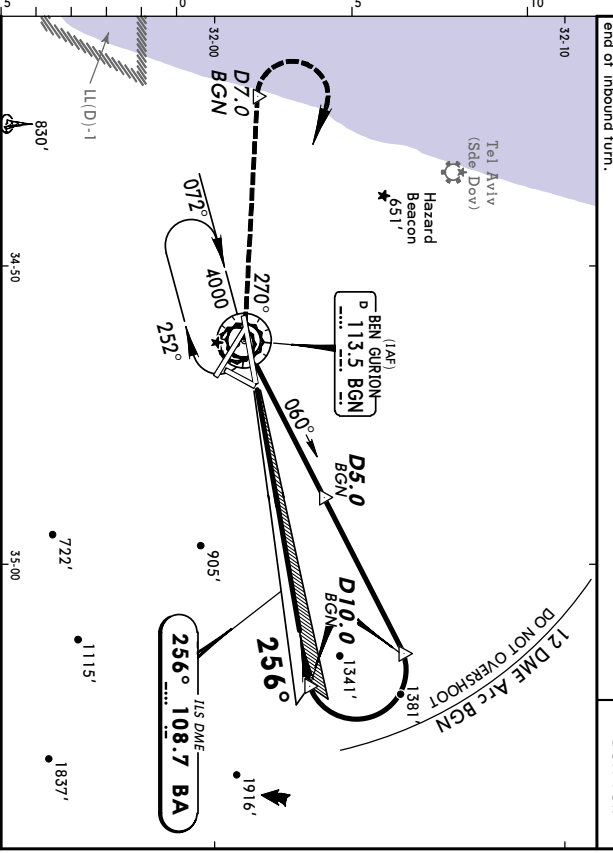
ILBG/TLV
BEN GURION
18 AUG 06 (1-2) **JEPPesen** **EFF 31 AUG**
TEL AVIV, ISRAEL
ILS Rwy 26

ATIS	BEN GURION Approach	BEN GURION TMA	BEN GURION Tower	Ground
132.5	120.5	119.5	132.1	129.2
LOC	Final	GS	ILS	
108.7	108.7	3000' (2876')	Refer to Minimums	
BA	Appch Crs	D10.0 BGN	DA(H)	
			124'	
			Rwy	
			124'	

MISSED APCH: Climb STRAIGHT AHEAD to 500', then turn RIGHT to intercept outbound R-270 to cross D7.0 BGN at 3000', then turn RIGHT to VOR climbing to 4000' and hold.

Air Set: IFA Rwy Elev: 4 Hpa Trans level: FL 115 Trans alt: 10500'

1. ILS GS not to be used outside 5° from localizer. 2. GS intercept is very close to the end of inbound turn.



TERPS

LOC	BC DME	ALTIMETER	GS out	LOC (GS out)
	9.0	3450'	5.0	1450'
			3.0	1130'
			2.0	810'
			1.0	480'

Grnd speed-Kts: 70 90 100 120 140 160
GS: 3.00° 377 484 538 646 753 861

ILS STRAIGHT-IN LANDING Rwy 26
DA(H) 324' (200')
FULL TDZ or Cl out ALS out
DA(H) 374' (250')
ALS out

CIRCLE-TO-LAND LOC (GS out)
High terrain East of airport
Remain within D3.8 BGN
HIALS 500'
REL PAPI PAPI
RT

TERPS

A	B	C	D
RVR 550m	RVR 720m	RVR 800m	RVR 1800m
1200m	1200m	1200m	165
1200m	1200m	1200m	830' (695')

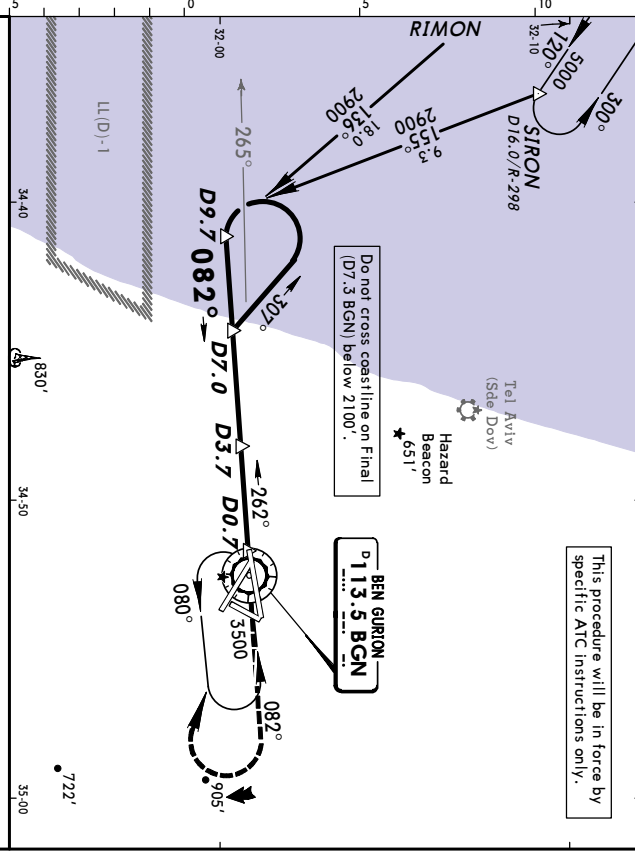
CHANGES: Final apch bearing OM withdrawn. Minimums

LLBG/TLV
BEN GURION
27 OCT 06 (3-1)
JEPPRESEN
TEL AVIV, ISRAEL
VOR DME Rwy 08

ATIS	BEN GURION Approach	BEN GURION Tower	Ground
132.5	120.5	132.1	129.2
VOR BGN	Final Appch Crs	Minimum Alt D3.7	MDA(H) 500' (403')
113.5	082°	1000' (903')	Appt Elev 135'
			Rwy 97'

MISSED APCH: Climb STRAIGHT AHEAD to 2000', turn RIGHT climb to 3500' to VOR and hold.

Alt Set: hPa Rwy Elev: 4 hPa Trans level: FL 115 Trans alt: 10500' MSA BGN VOR



TERPS

Grnd speed-Kts	70	90	100	120	140	160		
Descent Gradient 4.9%	347	447	496	595	695	794		
MAP at D0.7								

MAP at D0.7

STRAIGHT-IN LANDING RWY 08

MDA(H)	500' (403')
Max Kts	90
MDA(H)	600' (465')
Max Kts	120
MDA(H)	630' (495')
Max Kts	140
MDA(H)	730' (595')
Max Kts	165
MDA(H)	830' (695')

CIRCLE-TO-LAND High terrain East of airport Remain within D3.8

High terrain East of airport Remain within D3.8

PAR 2000'

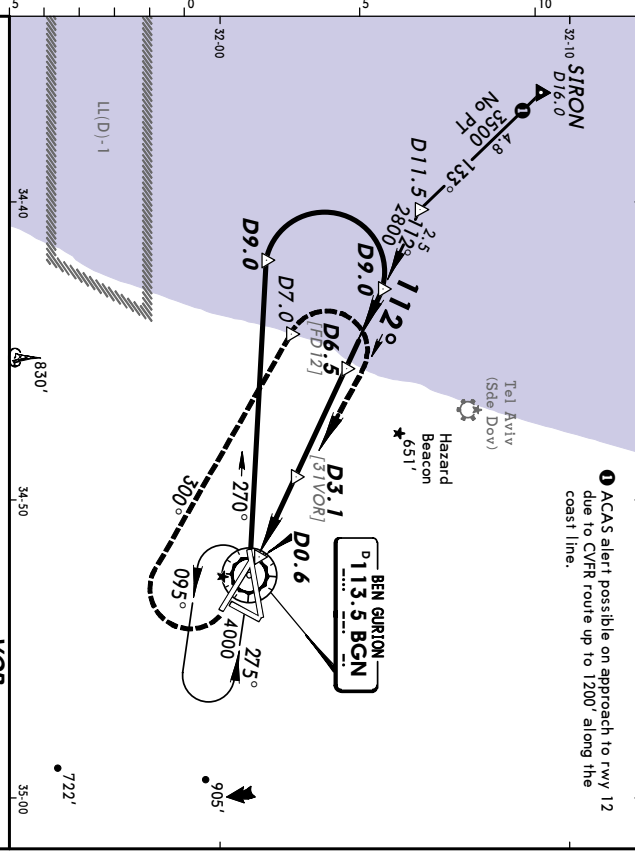
CHANGES: Note: Descent Gradient. © JEPPRESEN SANDERSON, INC., 2006. ALL RIGHTS RESERVED.

LLBG/TLV
BEN GURION
27 OCT 06 (3-2)
JEPPRESEN
TEL AVIV, ISRAEL
VOR DME Rwy 12

ATIS	BEN GURION Approach	BEN GURION Tower	Ground
132.5	120.5	132.1	129.2
VOR BGN	Final Appch Crs	Minimum Alt D6.5	MDA(H) 580' (468')
113.5	112°	2040' (1928')	Appt Elev 135'
			Rwy 112'

MISSED APCH: Climbing turn RIGHT onto 3000' to cross D7.0 at 3000', then turn RIGHT to VOR climbing to 4000' and hold.

Alt Set: hPa Rwy Elev: 4 hPa Trans level: FL 115 Trans alt: 10500' MSA BGN VOR



TERPS

Grnd speed-Kts	70	90	100	120	140	160		
Descent Gradient 5.24% or Descent angle 3.00°	372	478	531	637	743	849		
MAP at D0.6								

MAP at D0.6

STRAIGHT-IN LANDING RWY 12

MDA(H)	580' (468')
Max Kts	90
MDA(H)	580' (465')
Max Kts	120
MDA(H)	630' (495')
Max Kts	140
MDA(H)	730' (595')
Max Kts	165
MDA(H)	830' (695')

CIRCLE-TO-LAND High terrain East of airport Remain within D3.8

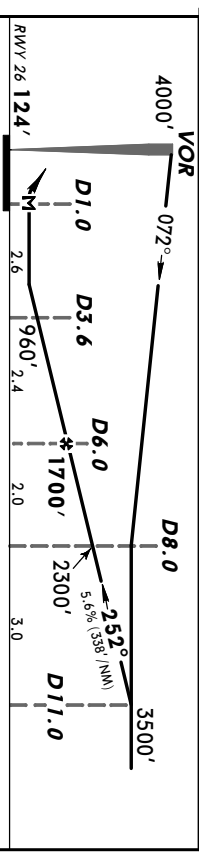
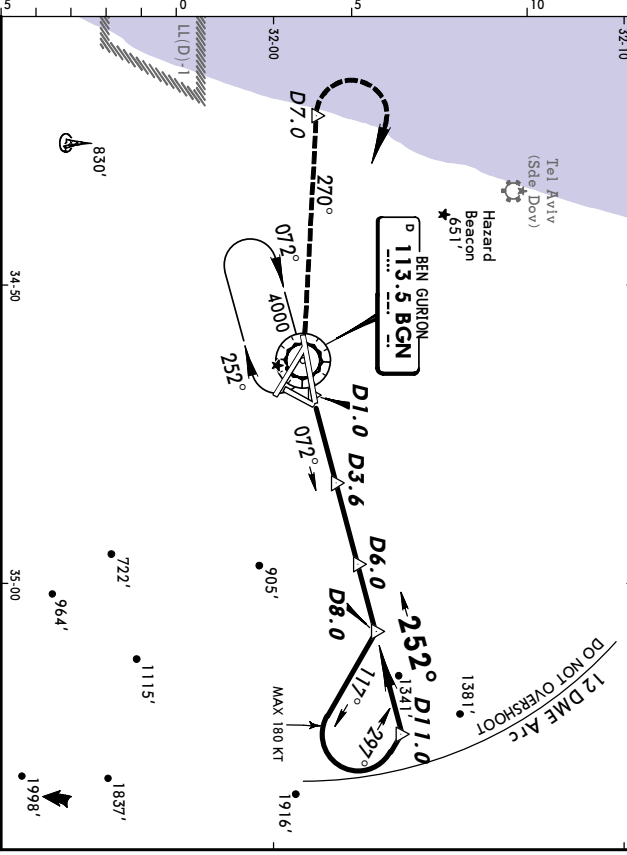
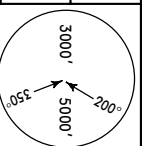
High terrain East of airport Remain within D3.8

PAR 300°

CHANGES: None. © JEPPRESEN SANDERSON, INC., 1999, 2006. ALL RIGHTS RESERVED.

ILBG/TLV
BEN GURION
27 OCT 06 **(13-3)**
JEPPERSEN
TEL AVIV, ISRAEL
VOR DME Rwy 26

ATIS	BEN GURION Approach	BEN GURION Tower	Ground
132.5	120.5	132.1	129.2
VOR BGN	Final Appch Crs	Minimum Alt D6.0	MDA(H) Rwy
113.5	252°	1700' (1576')	500' (376') 124'
MISSED APCH: Climb STRAIGHT AHEAD to VOR intercept R-270 outbound. Cross D7.0 at 5000', then turn RIGHT to VOR climbing to 4000' and hold.			
Alt Set: hPa	Rwy Elev: 4 hPa	Trans level: FL 115	Trans alt: 10500'
			MSA BGN VOR



Grnd speed-Kts	70	90	100	120	140	160		
Descent Gradient	5.6%	394	507	563	675	788	900	
MAP at D1.0								

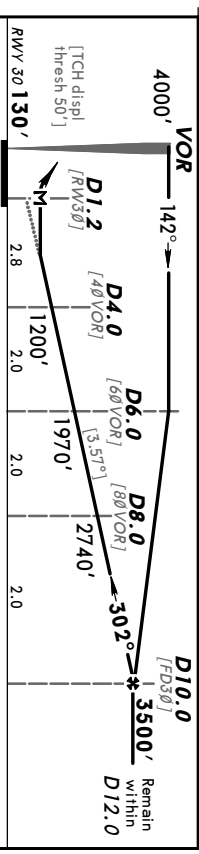
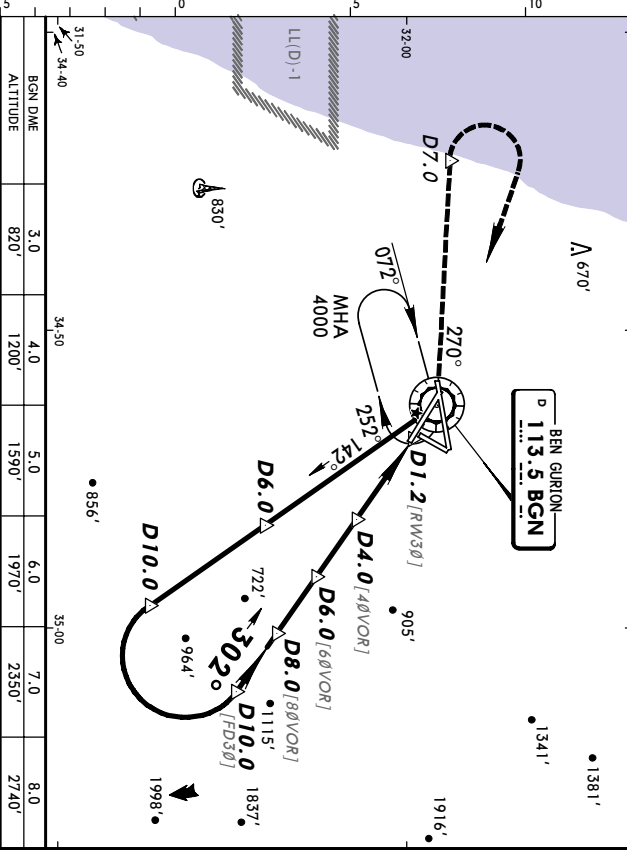
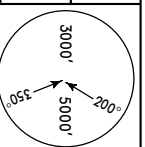
STRAIGHT-IN LANDING Rwy 26		CEILING REQUIRED		CIRCLE-TO-LAND	
MDA(H)	500' (376')	High terrain East of airport Remain within D5.8		REIL	3000'
CEILING-VISIBILITY	ALS out	REIL	PAPI	LT	BGN onto R-270

A	400' - 800m	Max Kts	90	MDA(H)	580' (445')	CEIL-VIS	500' - 1600m
B	400' - 1600m	Max Kts	120	MDA(H)	630' (495')	CEIL-VIS	500' - 1600m
C	400' - 1600m	Max Kts	140	MDA(H)	730' (595')	CEIL-VIS	500' - 2400m
D	400' - 1600m	Max Kts	165	MDA(H)	830' (695')	CEIL-VIS	600' - 3600m

TERPS
CHANGES: Descent Gradient. © JEPPERSEN SANDERSON, INC., 1999, 2006. ALL RIGHTS RESERVED.

ILBG/TLV
BEN GURION
27 OCT 06 **(13-4)**
JEPPERSEN
TEL AVIV, ISRAEL
VOR DME Rwy 30

ATIS	BEN GURION Approach	BEN GURION Tower	Ground
132.5	120.5	132.1	129.2
VOR BGN	Final Appch Crs	Minimum Alt D10.0	MDA(H) Rwy
113.5	302°	3500' (3370')	640' (510') 130'
MISSED APCH: Turn LEFT onto R-270 outbound VOR climbing to 3000'. At D7.0 turn RIGHT to VOR climbing to 4000' and hold.			
Alt Set: hPa	Rwy Elev: 4 hPa	Trans level: FL 115	Trans alt: 10500'
			MSA BGN VOR



Grnd speed-Kts	70	90	100	120	140	160		
Descent Gradient	6.23% or	442	569	632	758	885	1011	
MAP at D1.2								

STRAIGHT-IN LANDING Rwy 30		CEILING REQUIRED		CIRCLE-TO-LAND	
MDA(H)	640' (510')	High terrain East of airport Remain within D3.8		REIL	3000'
CEILING-VISIBILITY	ALS out	REIL	PAPI	LT	BGN onto R-270

A	1600m	Max Kts	90	MDA(H)	640' (505')	CEIL-VIS	1600m
B	1600m	Max Kts	120	MDA(H)	730' (595')	CEIL-VIS	2400m
C	2400m	Max Kts	140	MDA(H)	830' (695')	CEIL-VIS	3600m
D	2400m	Max Kts	165	MDA(H)	830' (695')	CEIL-VIS	3600m

TERPS
CHANGES: None. © JEPPERSEN SANDERSON, INC., 2003, 2006. ALL RIGHTS RESERVED.

ILBG/TLV
BEN GURION

JEPPESEN
 10 NOV 06
EFF 23 NOV 19-10

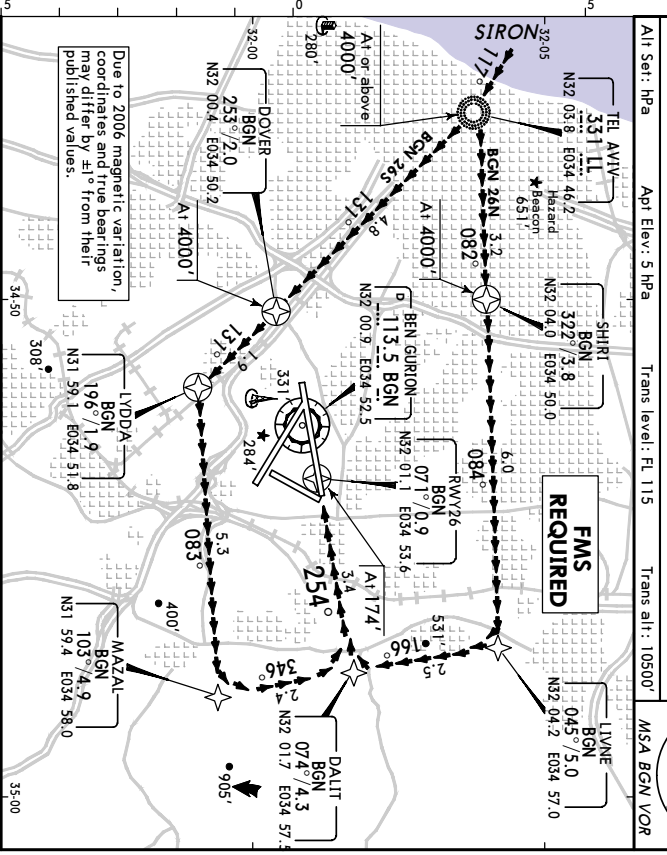
TEL AVIV, ISRAEL
RNAV VISUAL Rwy 26

ATIS	BEN GURION Approach	BEN GURION Tower	Ground
132.5	120.5	132.1	129.2

NAV/AIDS-Refer to Planview	Final Apch Crs	Minimum Alt	No MDA(H) published	Aprt Elev
	254°	No FAF		135'

MISSED APCH: Contact Tower for instructions.

Alt Set: hPa Aprt Elev: 5 hPa Trans level: FL 115 Trans alt: 10500' MSA BGN VOR



CEILING REQUIRED		REIL	Refer to Missed Apch above
VISUAL LANDING Rwy 26		PAPI	
CEILING-VISIBILITY		FAP1	
2000' - 5 km			

ILBG/TLV
BEN GURION

JEPPESEN
 10 NOV 06
EFF 23 NOV 19-11

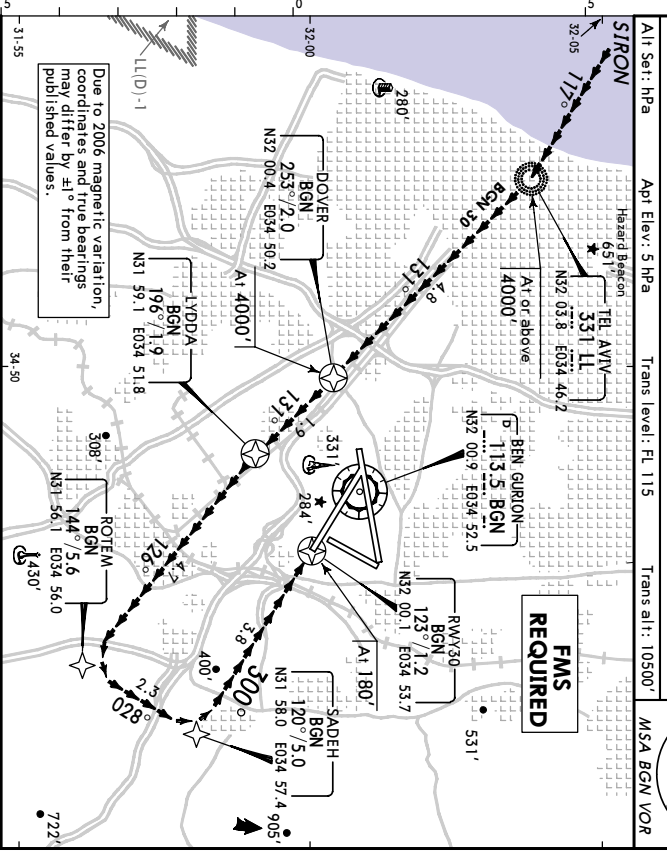
TEL AVIV, ISRAEL
RNAV VISUAL Rwy 30

ATIS	BEN GURION Approach	BEN GURION Tower	Ground
132.5	120.5	132.1	129.2

NAV/AIDS-Refer to Planview	Final Apch Crs	Minimum Alt	No MDA(H) published	Aprt Elev
	300°	No FAF		135'

MISSED APCH: Contact Tower for instructions.

Alt Set: hPa Aprt Elev: 5 hPa Trans level: FL 115 Trans alt: 10500' MSA BGN VOR



CEILING REQUIRED		REIL	Refer to Missed Apch above
VISUAL LANDING Rwy 30		PAPI	
CEILING-VISIBILITY			
2000' - 5 km			

