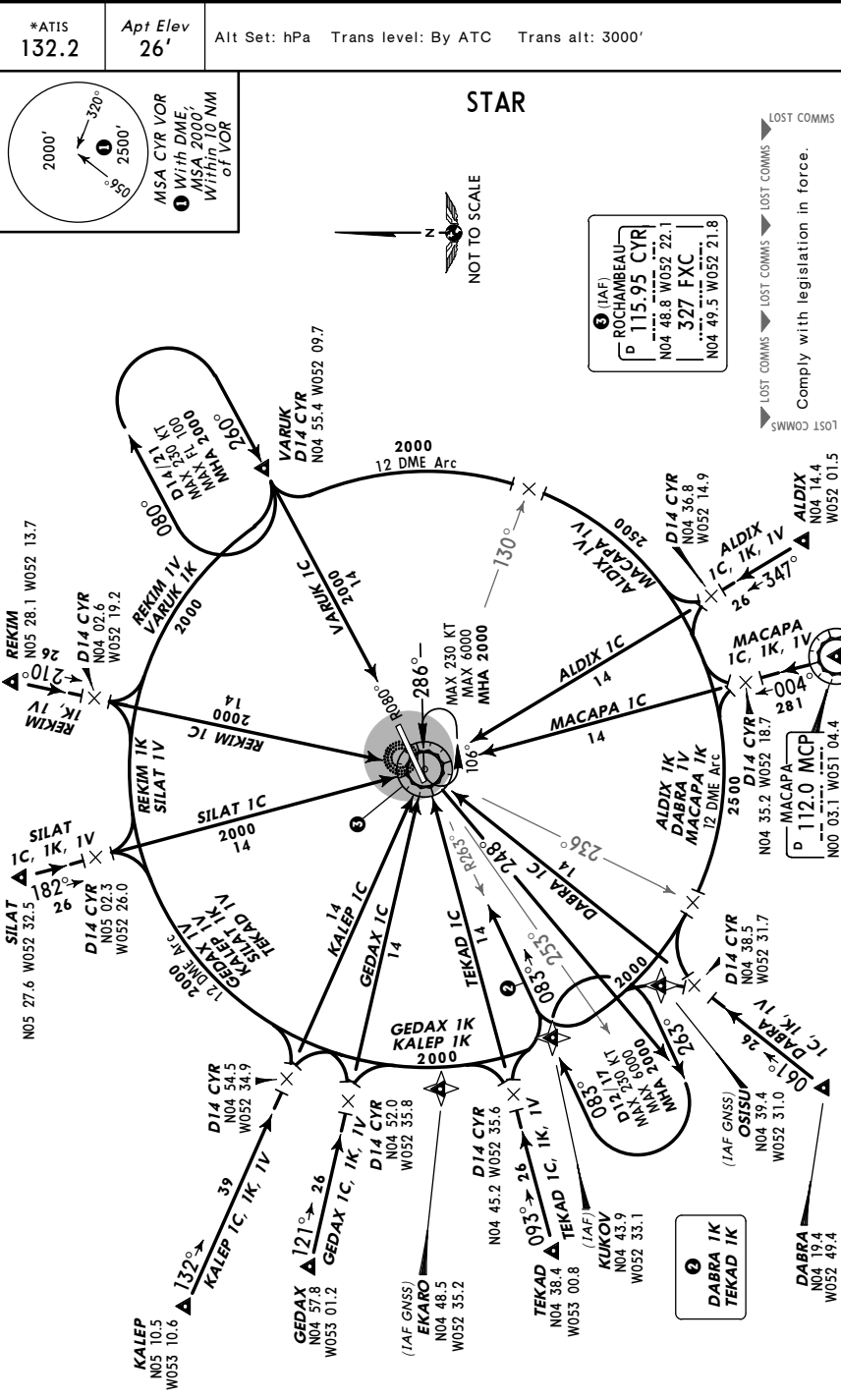


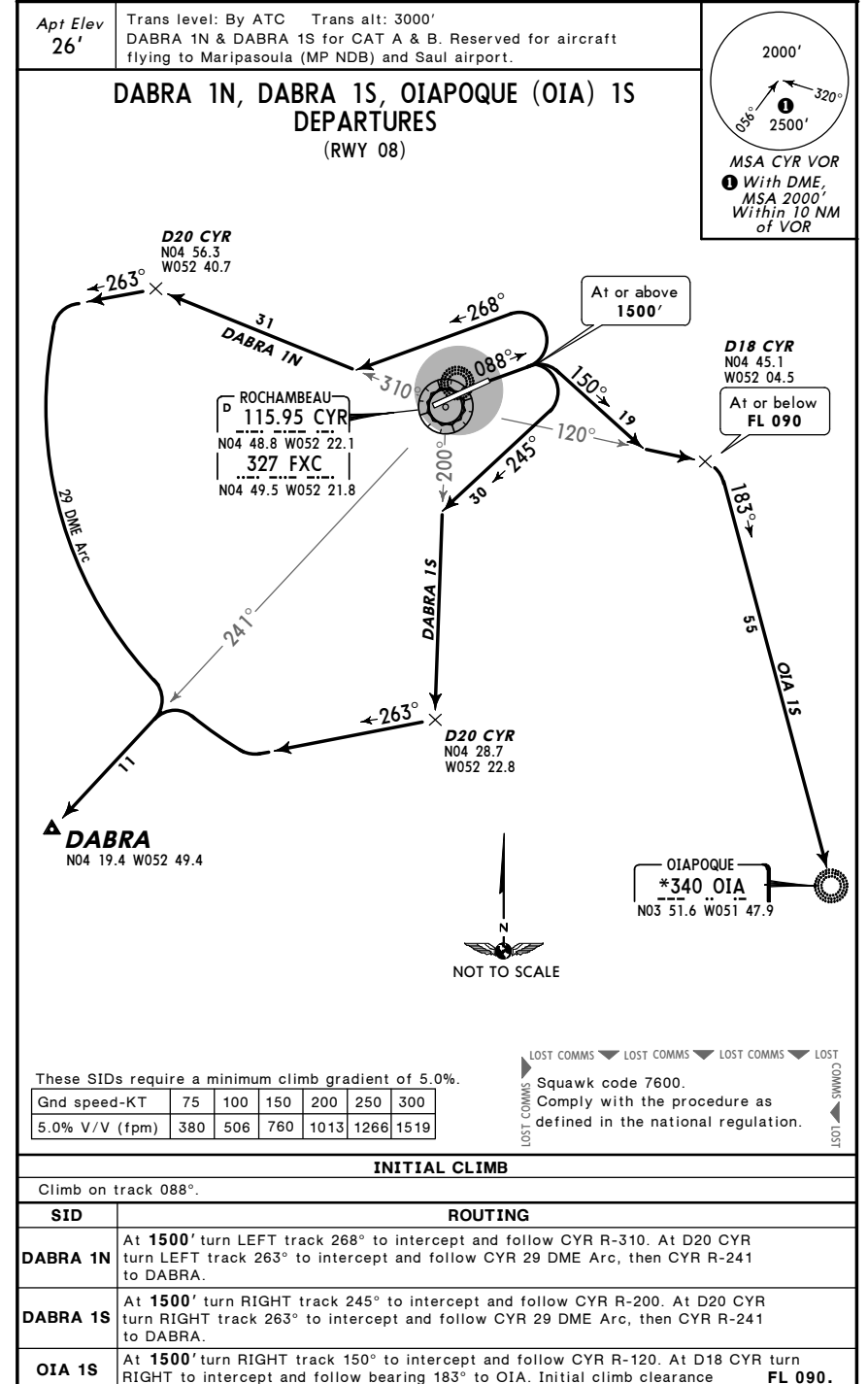
SOCA/CAY  
 ROCHAMBEAU

JEPPESEN CAYENNE, FRENCH GUIANA  
 25 DEC 09 10-2 STAR

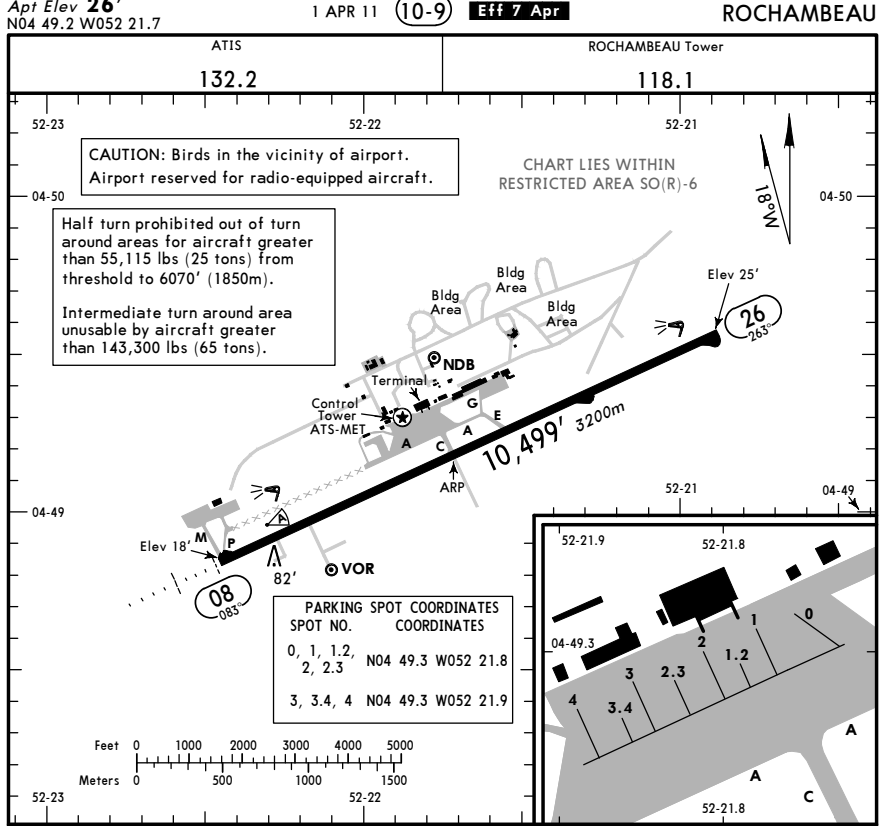


SOCA/CAY  
 ROCHAMBEAU

JEPPESEN CAYENNE, FRENCH GUIANA  
 25 DEC 09 10-3 SID



**SOCA/CAY** **JEPPESEN CAYENNE, FRENCH GUIANA**  
 Apt Elev 26' 1 APR 11 (10-9) Eff 7 Apr ROCHAMBEAU



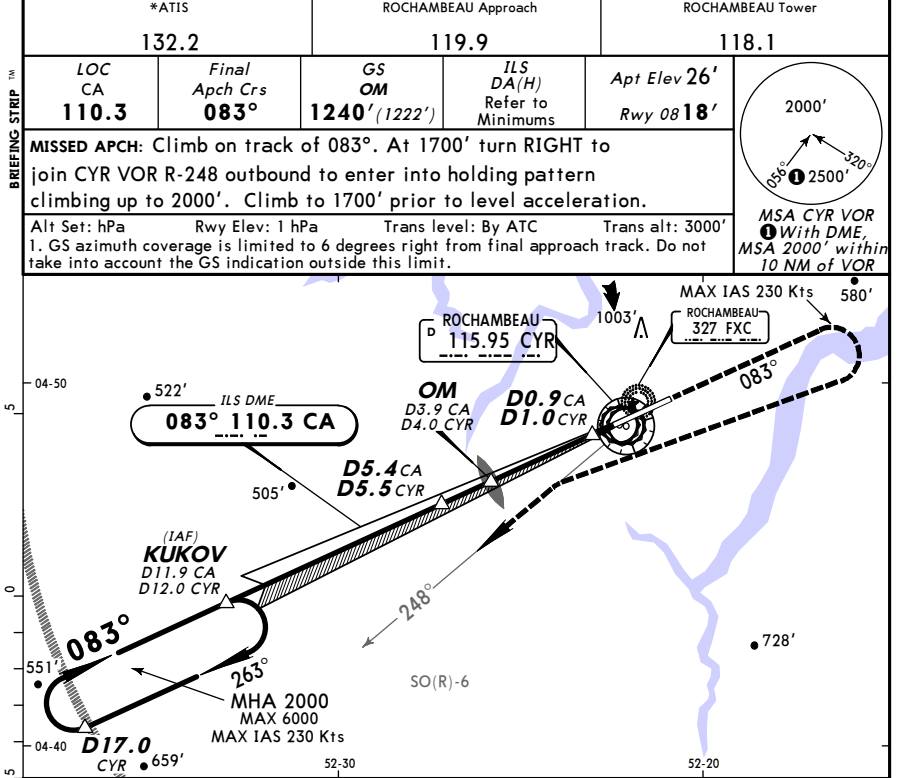
RWY	USABLE LENGTHS			
	Threshold	Glide Slope	TAKE-OFF	WIDTH
08	HIRL	HIALS PAPI-L (angle 3.0°)	RVR	148' 45m
26	HIRL	PAPI-L (angle 3.0°)		

A	All Rwys		
	LVP must be in Force	RCLM (Day only) or RL	NIL (DAY only)
B	1 250m	400m	500m
C	300m		

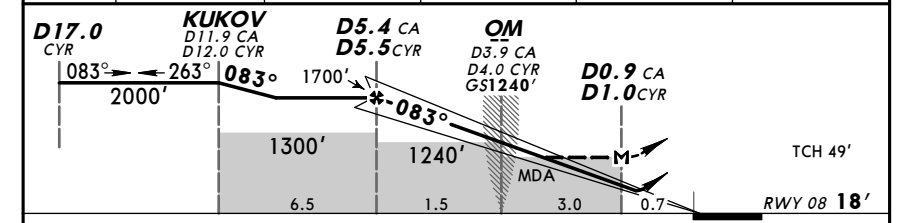
**1** Operators applying U.S. Ops Specs: CL required below 300m.

RECOMMENDED IFR DEPARTURE PROCEDURE  
 Rwy 08: Climb on 083° to 1500', then depart directly climbing to MEA.  
 Rwy 26: Climb on 263° to 1500', then depart directly climbing to MEA.

**SOCA/CAY** **JEPPESEN CAYENNE, FRENCH GUIANA**  
 ROCHAMBEAU 24 JUN 11 Eff 30 Jun (11-1) KUKOV ILS DME Rwy 08



LOC (GS out)	CA DME/CYR DME	5.0	4.0	3.0	2.0
	CA ALTITUDE	1590'	1270'	960'	640'
	CYR ALTITUDE	1560'	1240'	930'	610'



Gnd speed-Kts	70	90	100	120	140	160
GS	3.00°	372	478	531	637	743
LOC Descent Gradient	5.2%	369	474	527	632	737

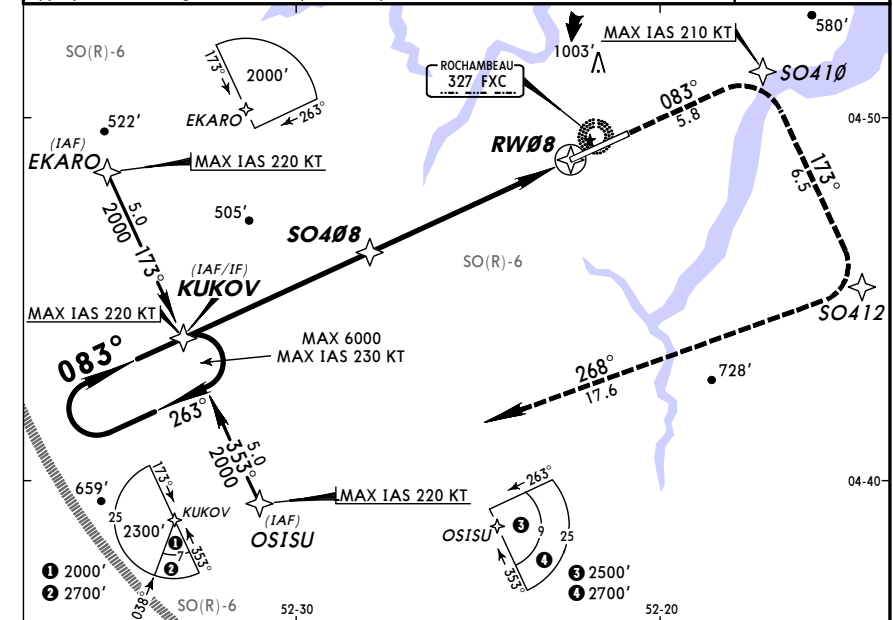
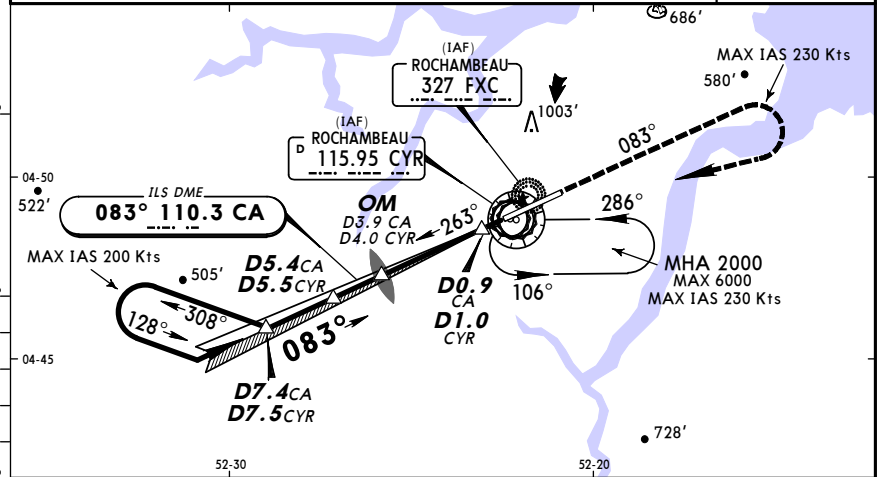
A	ILS		LOC (GS out)		CIRCLE-TO-LAND	
	DA(H)	MDA(H)	DA(H)	MDA(H)	DAY	NIGHT
B	A: 280'(262')	450'(432')	B: 290'(272')	450'(432')	730'(704')	1600m
C	C, D: 300'(282')				910'(884')	2400m
D					1090'(1064')	3600m

**SOCA/CAY** **JEPPESEN** **CAYENNE, FRENCH GUIANA**  
**ROCHAMBEAU** 24 JUN 11 (11-2) Eff 30 Jun  
**VOR DME/VOR/ NDB/ILS DME Rwy 08**

**SOCA/CAY** **JEPPESEN** **CAYENNE, FRENCH GUIANA**  
**ROCHAMBEAU** 24 JUN 11 (12-1) Eff 30 Jun  
**RNAV (GNSS) Rwy 08**

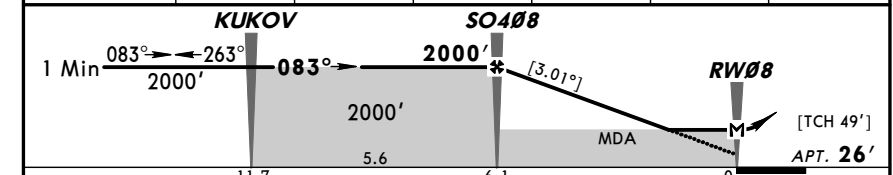
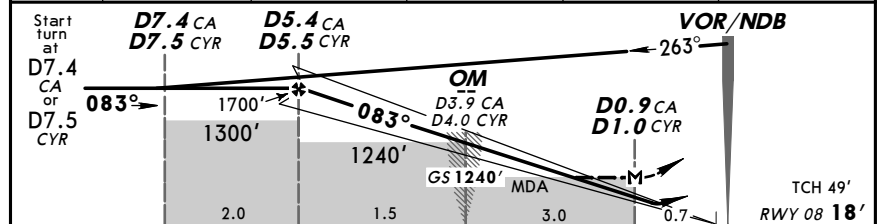
*ATIS		ROCHAMBEAU Approach		ROCHAMBEAU Tower	
132.2		119.9		118.1	
LOC CA <b>110.3</b>	Final ApcH Crs <b>083°</b>	GS OM <b>1240'</b> (1222')	ILS DA(H) Refer to Minimums	Apt Elev <b>26'</b>	Rwy 08 <b>18'</b>
<b>MISSED APCH:</b> Climb on track of 083°. At 1700', turn RIGHT to CYR VOR or FXC NDB climbing up to 2000'. Climb to 1700' prior to level acceleration.					
Alt Set: hPa Apt Elev: 1 hPa Trans level: By ATC Trans alt: 3000' 1. GS azimuth coverage is limited to 6 degrees right from final approach track. Do not take into account the GS indication outside this limit.					

ATIS		ROCHAMBEAU Approach		ROCHAMBEAU Tower	
132.2		119.9		118.1	
RNAV	Final ApcH Crs <b>083°</b>	Minimum Alt <b>SO408</b> 2000' (1974')	LNAV MDA(H) <b>540'</b> (514')	Apt Elev <b>26'</b>	Rwy 08 <b>18'</b>
<b>MISSED APCH:</b> Climb direct to SO410 then turn RIGHT inbound SO412 then turn RIGHT inbound OSISU climbing to 2000' or proceed according to ATS. Climb up to 1500' prior to level acceleration.					TAA 25 NM IAF
Alt Set: hPa Apt Elev: 1 hPa Trans level: By ATC Trans alt: 3000' 1. In case of loss of required RNAV capability, the pilot must follow or join the appropriate existing conventional published procedure.					



LOC (GS out)	CA DME/CYR DME	5.0	4.0	3.0	2.0
	CA ALTITUDE	1590'	1270'	960'	640'
	CYR ALTITUDE	1560'	1240'	930'	610'

NM to RW08	5.0	4.0	3.0	2.0	1.0
ALTITUDE	1978'	1660'	1342'	1023'	705'



Gnd speed-Kts	70	90	100	120	140	160	
GS	3.00°	372	478	531	637	743	849
LOC Descent Gradient	5.2%	369	474	527	632	737	843
MAP at D0.9 CA/D1.0 CYR							

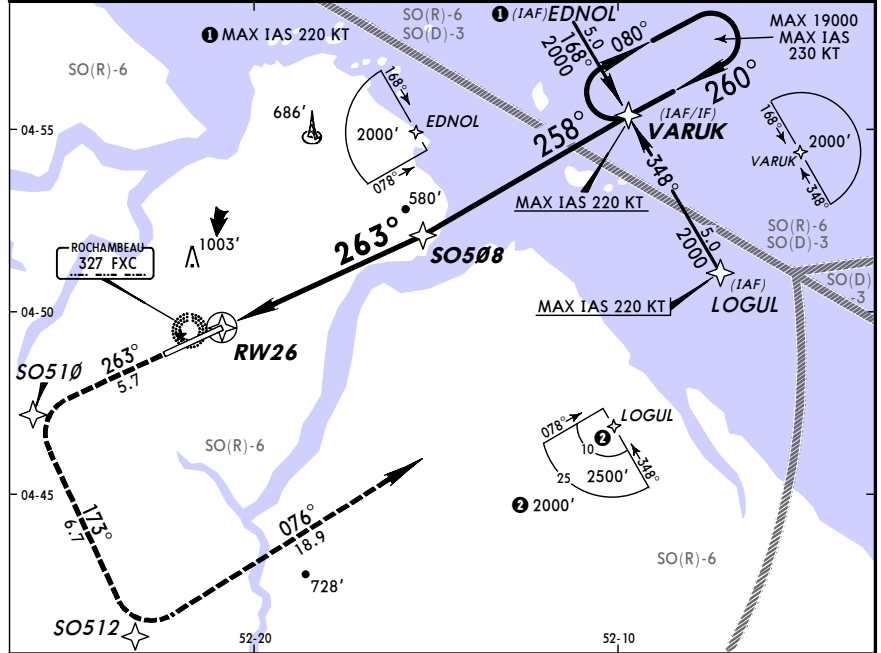
Gnd speed-Kts	70	90	100	120	140	160	
Descent angle	[3.01°]	373	479	532	639	745	852
MAP at RW08							
FAF to MAP	6.1	5:14	4:04	3:40	3:03	2:37	2:17

JAR-OPS STRAIGHT-IN LANDING RWY 08		CIRCLE-TO-LAND	
ILS A: <b>280'</b> (262') DA(H) B: <b>290'</b> (272') C, D: <b>300'</b> (282')		Prohibited North of Rwy DAY NIGHT	
LOC (GS out)		MDA(H) 450' (432')	
FULL	HIALS out	HIALS out	Max Kts
A			100
B	RVR 900m	RVR 1200m	135
C	RVR 1200m	RVR 1600m	180
D	RVR 1600m	RVR 2000m	205
		730' (704')	1600m
		910' (884')	2400m
		1090' (1064')	3600m

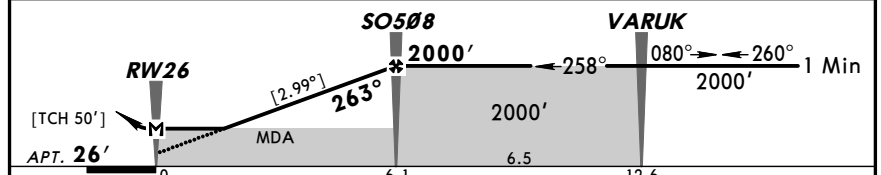
JAR-OPS STRAIGHT-IN LANDING RWY 08		CIRCLE-TO-LAND	
LNAV MDA(H) <b>540'</b> (514')		Prohibited North of Runway. DAY NIGHT	
LOC (GS out)		MDA(H) 760' (734')	
FULL	HIALS out	HIALS out	Max Kts
A			100
B	RVR 1900m	RVR 1900m	135
C	RVR 1900m	RVR 2000m	180
D	RVR 1900m	RVR 2000m	205
		760' (734')	1900m
		1100' (1074')	2400m
		1100' (1074')	3600m

**SOCA/CAY**  
**ROCHAMBEAU**  
 24 JUN 11 **(12-2)** **Eff 30 Jun** **CAYENNE, FRENCH GUIANA**  
**RNAV (GNSS) Rwy 26**

ATIS <b>132.2</b>		ROCHAMBEAU Approach <b>119.9</b>		ROCHAMBEAU Tower <b>118.1</b>	
RNAV	Final Apch Crs <b>263°</b>	Minimum Alt <b>S0508</b> <b>2000'</b> (1974')	LNAV MDA(H) <b>550'</b> (524')	Apt Elev <b>26'</b>	Rwy 26 <b>25'</b>
<b>MISSED APCH:</b> Climb direct to SO510 then turn LEFT inbound SO512 then turn LEFT inbound LOGUL climbing to 2000' or proceed according to ATS. Climb up to 1500' prior to level acceleration.					TAA 25 NM IAF
Alt Set: hPa    Apt Elev: 1 hPa    Trans level: By ATC    Trans alt: 3000' 1. In case of loss of required RNAV capability, the pilot must follow or join the appropriate existing conventional published procedure.					



NM to RW26	1.0	2.0	3.0	4.0	5.0	6.0
ALTITUDE	550'	707'	1025'	1345'	1663'	1980'

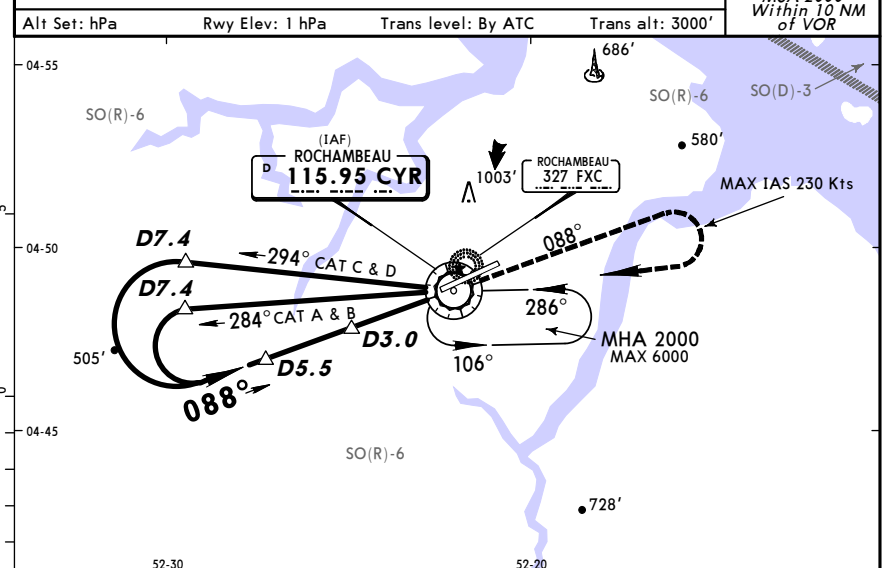


Gnd speed-Kts	70	90	100	120	140	160
Descent angle	[2.99°]	370	476	529	635	846
MAP at RW26						
FAF to MAP	6.1	5:14	4:04	3:40	3:03	2:37

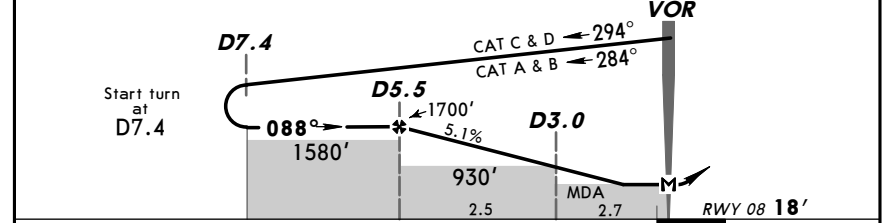
<b>JAR-OPS</b> STRAIGHT-IN LANDING RWY 26		CIRCLE-TO-LAND	
LNAV			
MDA(H) <b>550'</b> (524')			
A		A	
B		B	
C	RVR 2400m	C	NOT APPLICABLE
D		D	

**SOCA/CAY**  
**ROCHAMBEAU**  
 24 JUN 11 **(13-1)** **Eff 30 Jun** **CAYENNE, FRENCH GUIANA**  
**VOR DME Rwy 08**

*ATIS <b>132.2</b>		ROCHAMBEAU Approach <b>119.9</b>		ROCHAMBEAU Tower <b>118.1</b>	
VOR CYR <b>115.95</b>	Final Apch Crs <b>088°</b>	Procedure Alt <b>D5.5</b> <b>1700'</b> (1682')	MDA(H) <b>460'</b> (442')	Apt Elev <b>26'</b>	Rwy 08 <b>18'</b>
<b>MISSED APCH:</b> Climb outbound on CYR VOR R-088. At 1700', turn RIGHT to CYR VOR climbing up to 2000'. Climb to 1700' prior to level acceleration.					MSA CYR VOR 1 With DME, MSA 2000' Within 10 NM of VOR
Alt Set: hPa    Rwy Elev: 1 hPa    Trans level: By ATC    Trans alt: 3000'					



CYR DME	5.0	4.0	3.0	2.0
ALTITUDE	1560'	1250'	930'	620'

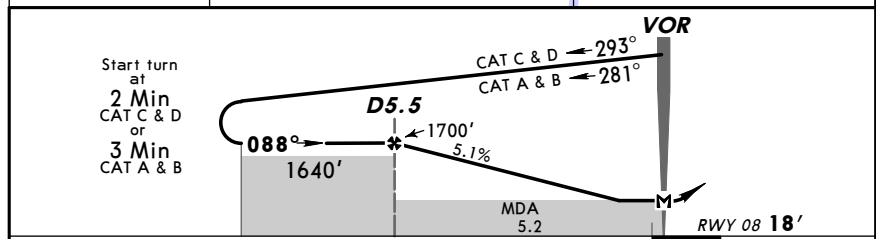
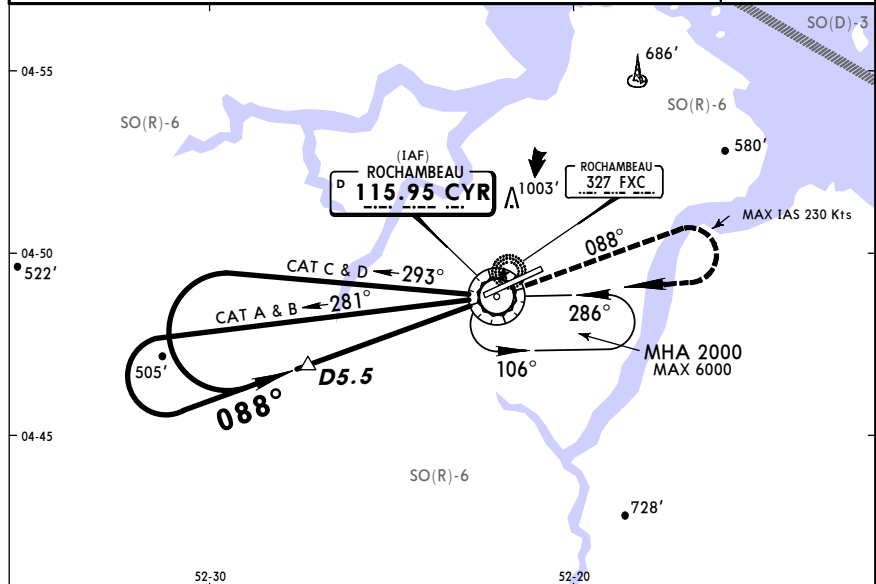


Gnd speed-Kts	70	90	100	120	140	160
Descent Gradient	5.1%	362	465	516	620	826
MAP at VOR						

<b>JAR-OPS</b> STRAIGHT-IN LANDING RWY 08		CIRCLE-TO-LAND	
MDA(H) <b>460'</b> (442')		Prohibited North of Rwy	
ALS out		Max Kts	MDA(H) VIS
A		100	<b>730'</b> (704')
B	RVR 1600m	135	<b>1600m</b>
C	RVR 1600m	180	<b>910'</b> (884')
D	RVR 2000m	205	<b>1090'</b> (1064')
			<b>2400m</b>
			<b>3600m</b>
			<b>NA</b>

**SOCA/CAY**  
**ROCHAMBEAU** **JEPPESEN** **CAYENNE, FRENCH GUIANA**  
 24 JUN 11 (13-2) Eff 30 Jun **VOR Rwy 08**

*ATIS 132.2		ROCHAMBEAU Approach 119.9		ROCHAMBEAU Tower 118.1	
VOR CYR 115.95	Final Apch Crs 088°	Procedure Alt D5.5 1700' (1682')	MDA(H) 890' (872')	Apt Elev 26'	Rwy 08 18'
MISSED APCH: Climb outbound on CYR VOR R-088. At 1700', turn RIGHT to CYR VOR climbing up to 2000'. Climb to 1700' prior to level acceleration.					
Alt Set: hPa		Rwy Elev: 1 hPa	Trans level: By ATC	Trans alt: 3000'	
MSA CYR VOR					

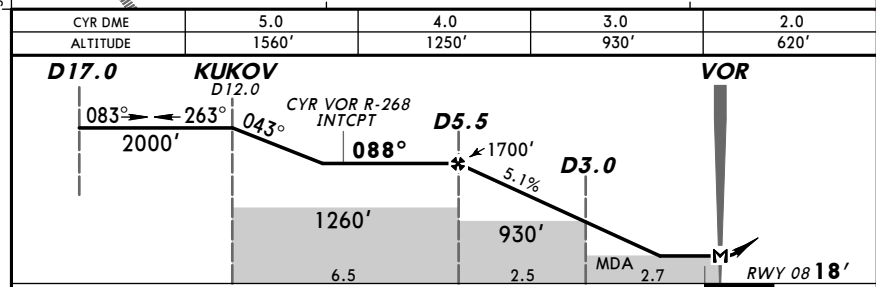
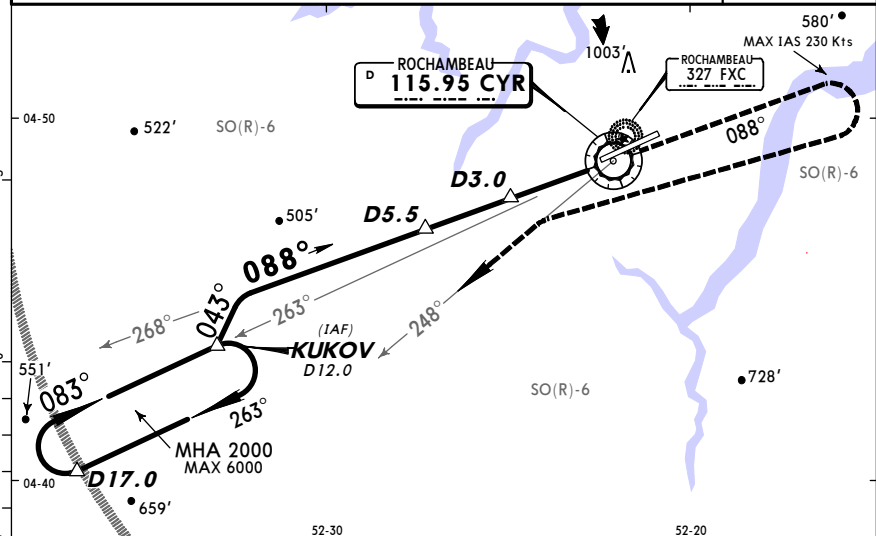


Gnd speed-Kts	70	90	100	120	140	160	HIALS PAPI	1700'	CYR on 115.95 R-088
Descent Gradient 5.1%	362	465	516	620	723	826			
MAP at VOR									

JAR-OPS STRAIGHT-IN LANDING RWY 08				JAR-OPS CIRCLE-TO-LAND			
MDA(H) 890' (872')				Prohibited North of Rwy			
ALS out				DAY			
				NIGHT			
A	RVR 3600m			Max Kts	MDA(H)	VIS	NA
B				100	890' (864')	3600m	
C				135	910' (884')	3600m	
D				180	910' (884')	3600m	
				205	1090' (1064')	3600m	

**SOCA/CAY**  
**ROCHAMBEAU** **JEPPESEN** **CAYENNE, FRENCH GUIANA**  
 24 JUN 11 (13-3) Eff 30 Jun **KUKOV VOR DME Rwy 08**

*ATIS 132.2		ROCHAMBEAU Approach 119.9		ROCHAMBEAU Tower 118.1	
VOR CYR 115.95	Final Apch Crs 088°	Procedure Alt D5.5 1700' (1682')	MDA(H) 460' (442')	Apt Elev 26'	Rwy 08 18'
MISSED APCH: Climb outbound on CYR VOR R-088. At 1700', turn RIGHT to join CYR VOR R-248 outbound to enter into holding pattern climbing up to 2000'. Climb to 1700' prior to level acceleration.					
Alt Set: hPa		Rwy Elev: 1 hPa	Trans level: By ATC	Trans alt: 3000'	
MSA CYR VOR					

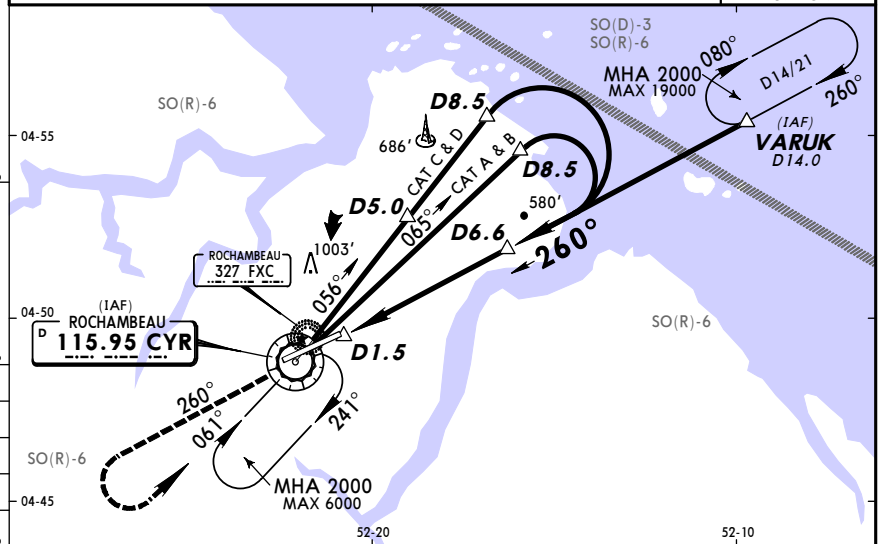


Gnd speed-Kts	70	90	100	120	140	160	HIALS PAPI	1700'	CYR on 115.95 R-088
Descent Gradient 5.1%	362	465	516	620	723	826			
MAP at VOR									

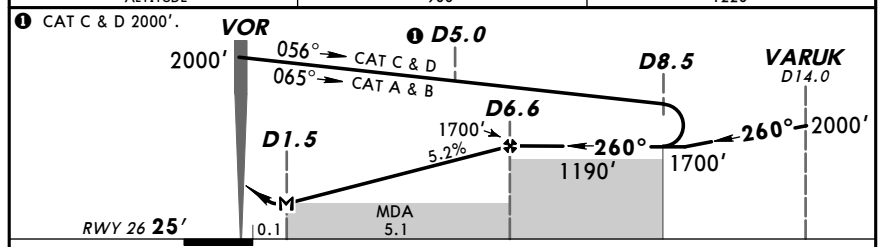
JAR-OPS STRAIGHT-IN LANDING RWY 08				JAR-OPS CIRCLE-TO-LAND			
MDA(H) 460' (442')				Prohibited North of Rwy			
ALS out				DAY			
				NIGHT			
A	RVR 1600m			Max Kts	MDA(H)	VIS	NA
B				100	730' (704')	1600m	
C				135	910' (884')	2400m	
D				180	910' (884')	2400m	
				205	1090' (1064')	3600m	

**SOCA/CAY**  
 ROCHAMBEAU  
 24 JUN 11 (13-4) Eff 30 Jun  
**JEPPESEN CAYENNE, FRENCH GUIANA**  
 VOR DME Rwy 26

*ATIS 132.2		ROCHAMBEAU Approach 119.9		ROCHAMBEAU Tower 118.1	
VOR CYR 115.95	Final Aptch Crs 260°	Procedure Alt D6.6 1700' (1675')	MDA(H) 680' (655')	Apt Elev 26' Rwy 26 25'	<p>MSA CYR VOR                  With DME,                  MSA 2000'                  Within 10 NM                  of VOR</p>
MISSED APCH: Climb outbound on CYR VOR R-260. At 1700' turn LEFT to enter holding climbing up to 2000'. Climb to 1700' prior to level acceleration.					
Alt Set: hPa		Rwy Elev: 1 hPa	Trans level: By ATC	Trans alt: 3000'	



CYR DME	4.0	5.0
ALTITUDE	900'	1220'

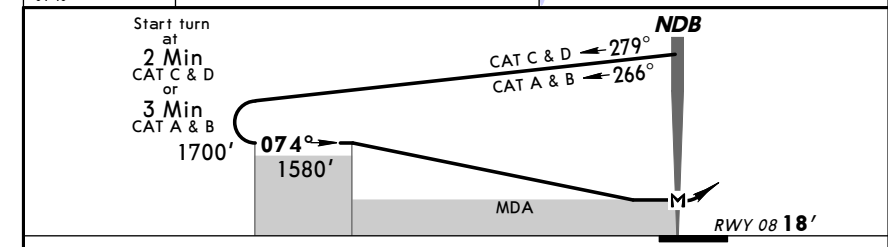
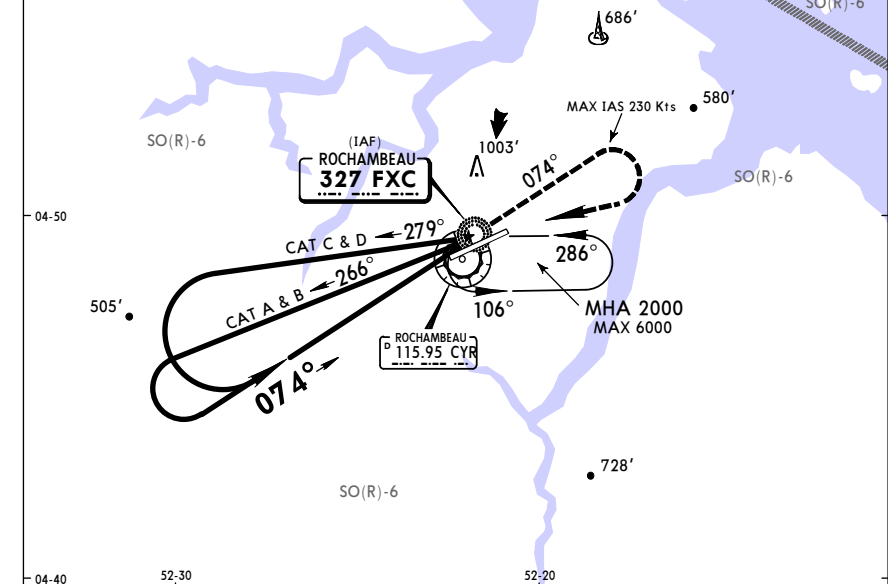


Gnd speed-Kts	70	90	100	120	140	160	PAPI-L	↑ on CYR 115.95 R-260
Descent Gradient 5.2%	369	474	527	632	737	843		
MAP at D1.5								

PANS OPS	STRAIGHT-IN LANDING RWY 26		CIRCLE-TO-LAND Prohibited North of Rwy		NIGHT
	MDA(H) 680' (655')		DAY	VIS	
A			840' (814')	2900m	NA
B					
C	RVR 2900m		940' (914')	2900m	
D			1090' (1064')	3600m	

**SOCA/CAY**  
 ROCHAMBEAU  
 24 JUN 11 (16-1) Eff 30 Jun  
**JEPPESEN CAYENNE, FRENCH GUIANA**  
 NDB Rwy 08

*ATIS 132.2		ROCHAMBEAU Approach 119.9		ROCHAMBEAU Tower 118.1	
NDB FXC 327	Final Aptch Crs 074°	No FAF	MDA(H) 890' (872')	Apt Elev 26' Rwy 08 18'	<p>MSA FXC NDB</p>
MISSED APCH: Climb via 074° bearing from FXC NDB. At 1700' turn RIGHT to FXC NDB climbing up to 2000'. Climb to 1700' prior to level acceleration.					
Alt Set: hPa		Rwy Elev: 1 hPa	Trans level: By ATC	Trans alt: 3000'	



						PAPI-L	↑ via FXC 327 074°
MAP at NDB							

PANS OPS	STRAIGHT-IN LANDING RWY 08		CIRCLE-TO-LAND Prohibited North of Rwy		NIGHT
	MDA(H) 890' (872')	ALS out	DAY	VIS	
A			890' (864')	3600m	NA
B					
C	RVR 3600m		910' (884')	3600m	
D			1090' (1064')	3600m	